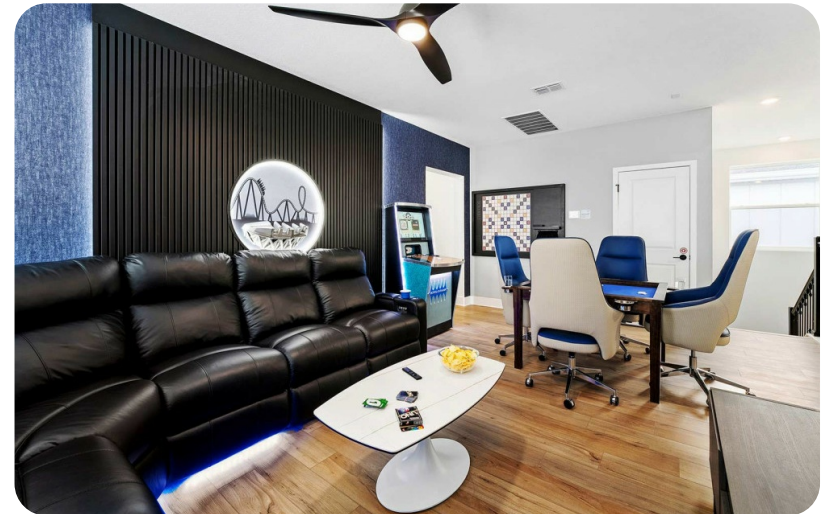


Villatel Orlando Resort

Villatel Orlando Resort 21

7 6 18 3543 sq.ft



Key features

- 7 bedrooms
- 6 bathrooms
- Sleeps 18
- Games room
- Private pool
- Hot tub
- Themed bedrooms

Bedrooms

Ground floor

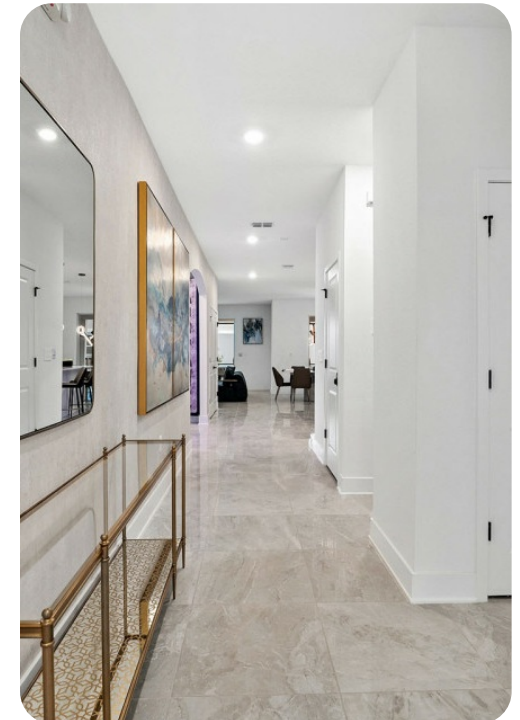
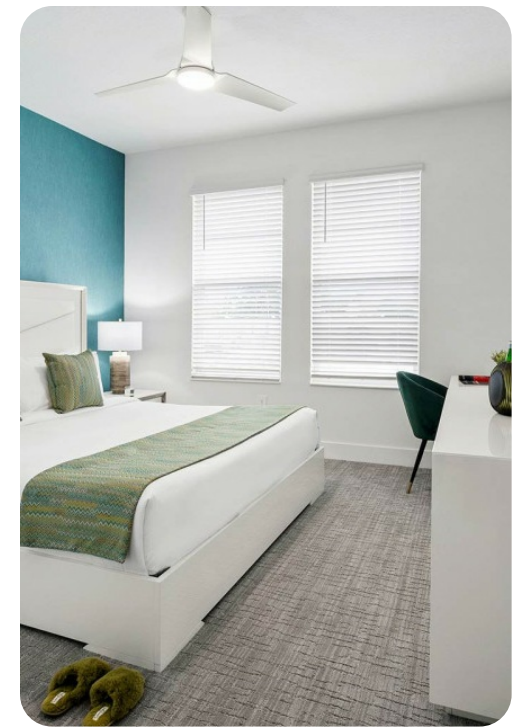
- Bedroom 1 - King-size bed

First floor

- Bedroom 2 - King-size bed
- Bedroom 3 - Queen-size bed
- Bedroom 4 - 2 double beds
- Bedroom 5 - King-size bed
- Bedroom 6 - 2 twin beds
- Bedroom 7 - 2 twin beds

Living area

- Open-plan living area
- Fully equipped kitchen
- Breakfast bar with seating
- Dining table and chairs
- Upstairs loft area includes shuffleboard, arcade machine, poker table, flat-screen TV and L-shaped sofa



Pool area

- Private pool
- Hot tub (pool heat required)
- Sunloungers
- Covered lanai with an alfresco dining and lounge area and foosball
- Safety fence & privacy pool screen

Home entertainment

- Flat-screen TVs in living area and all bedrooms
- Games room includes arcade machines

General

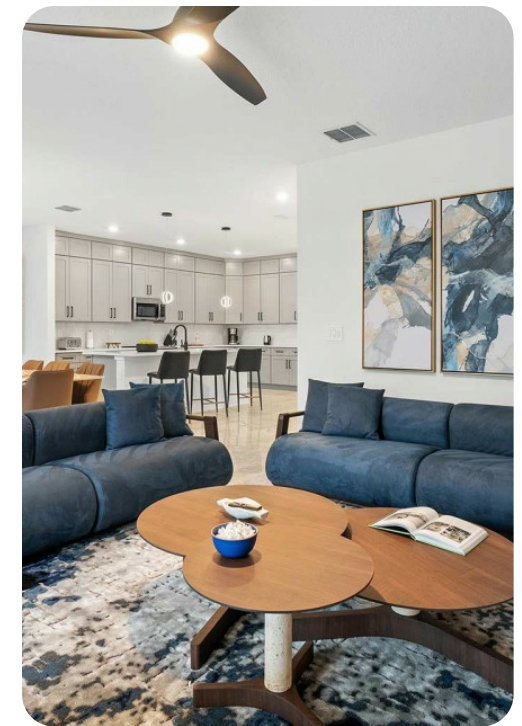
- Air conditioning throughout
- Complimentary wifi
- Bedding and towels included
- Private parking

Laundry room

- Washer and dryer
- Iron and ironing board

Children's equipment available for hire

- Crib
- Stroller
- High chair
- Pack and play



Resort Location

Situated on the iconic International Drive, you'll feel like you're in your own private villa retreat at the center of absolutely everything Orlando is famous for. Theme parks, shopping, dining, and entertainment of all kinds are a walk, jog, or very short drive away. That means you can spend more time hitting up all the best spots and less time hitting your car horn in rush hour traffic. Here's an overview of some of the most popular nearby attractions:

- Dezerland Park (1 mile away)
- FunSpot America (1 mile away)
- Orlando International Premium Outlets (1 mile away)
- Epic Universe (2 miles away)
- Universal Studios Orlando (2 miles away)
- SeaWorld Orlando (6 miles away)
- Walt Disney World (9 miles away)
- ESPN Wide World of Sports (13 miles away)

Resort Amenities (Opening 2025)

Staying steps from Epic Universe (opening 2025) and International Drive's endless dining & entertainment options is a major-league resort perk in and of itself. But come fall 2024, you can also plan an entire itinerary without even leaving the front gates. Kicking the traditional hotel offerings up a notch (or ten), The resorts 77-acre grounds will feature all-inclusive, on-site recreational activities, kidsâ€™ & adult amenities, and dining. Those include:

- Multi-slide waterpark
- Splash park and spray playground
- Lazy river
- Huge resort pool with lounge seating
- Basketball and pickleball courts
- kids' playground
- An outdoor bar & grill
- Community clubhouse
- Fitness center

