

📍 Lucca

# Villa Luigina

🛏 4 🍽 5 👥 8



## Key Features

- 4 bedrooms
- 5 bathrooms
- Sleeps 8
- Private pool
- Fitness area
- Landscaped garden

## Bedrooms

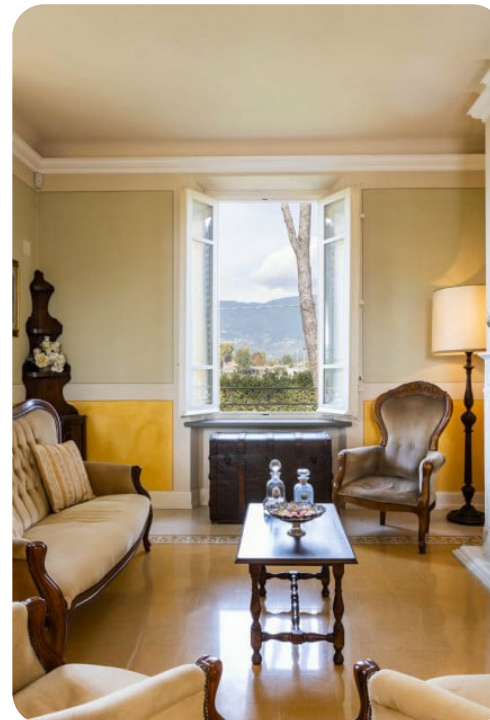
- Bedroom 1 - Double bed, shared bathroom with jacuzzi
- Bedroom 2 - Double bed, shared bathroom with jacuzzi
- Bedroom 3 - Double bed, shared bathroom with shower
- Bedroom 4 - 2 twin beds (convertible to king), shared bathroom with shower

## Living areas

- Living room with comfortable sofas and TV
- Dining room
- Equipped kitchen
- Fitness area with children's play area

## Outdoor area

- Private pool
- Sun beds
- Outdoor furniture
- Outdoor dining area
- Cold water shower



## General

- Air conditioning in the bedrooms
- WiFi
- Private parking
- Bedding and towels provided
- Washer dryer machine
- Iron and ironing board
- Baby cot and highchair
- Tennis table
- Pizza oven
- Gas Grill
- Hairdryer

## Good to know

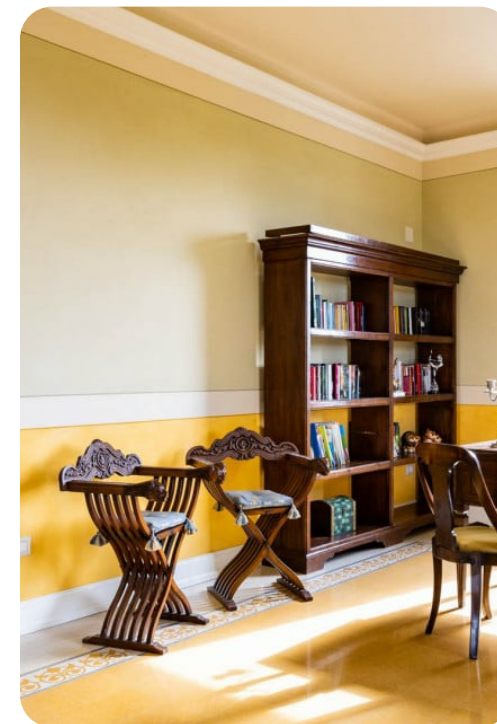
- Pets: Yes 50,00 Euros for animal for week to be paid on site.
- The pool is open from the last Saturday in April until the first Saturday in October.
- Electricity forfait (180,00 Euros during high and very high season, 150,00 Euros during medium and low season and May)
- Tourism tax

## Price includes

- Property completely cleaned
- Utilities: water - gas for kitchen use and hot water

## Extras on request

- Heating (on consumption with prices in effect at the time of lease)
- Extra cleaning (22,00 Euros/hour per person employed)
- Extra linen (15,00 Euros per person)
- Extra cleaning in case of animals (50,00 Euros per week per animal)
- Wood (15,00 Euros/100KG)



## Places of interest

- Airport: Pisa 40 km, Firenze 85 km, Bologna 150 km, Roma 360 km, Milano 300 km
- Train station: Lucca 8 km
- Shops and services: Minimarket 700 m, Lammari 1,5 km
- Beaches: Viareggio 39 km, Marina di Vecchiano 35 km, Forte dei Marmi 45 km, Cinque terre 90 km
- Attractions within 100 km: Lucca center 8 km, Pisa 40 km, Firenze 95 km, Forte dei Marmi 45 km, Le Cinque Terre 95 km, Montecatini Terme 30 km, Certaldo 70 km, San Miniato 50 km, Greve in Chianti 105 km, San Gimignano 80 km.





