

📍 Florence

Villa Beltrami

🛏 7 🍽 7 👥 14



Key Features

- 7 bedrooms
- 7 bathrooms
- Sleeps 14
- Private pool
- Tennis court
- Landscaped garden

Bedrooms

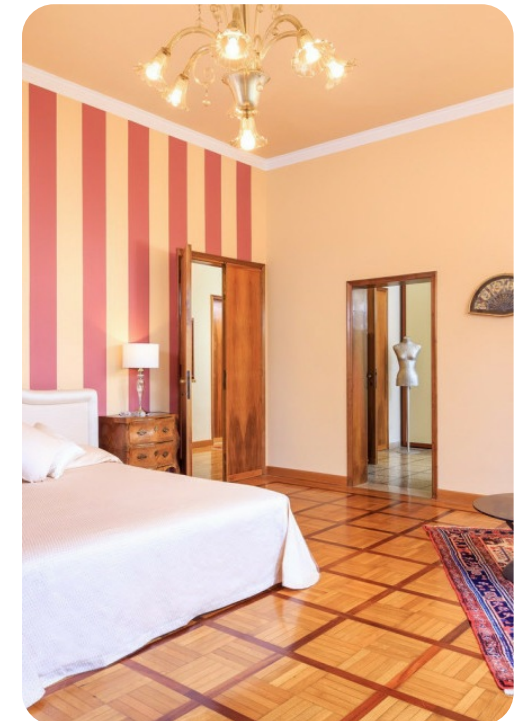
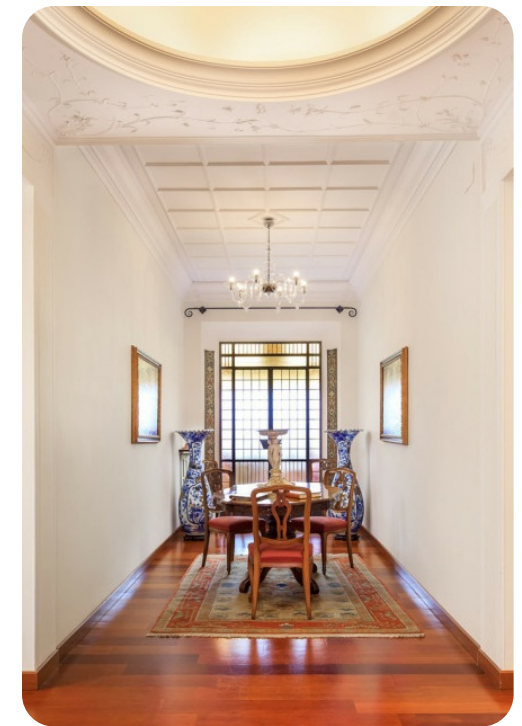
- Bedroom 1 - King-size bed, en-suite bathroom with tub and shower
- Bedroom 2 - Double bed, en-suite bathroom with tub
- Bedroom 3 - Double bed, shared bathroom with tub
- Bedroom 4 - Double bed, en-suite bathroom with shower
- Bedroom 5 - Double bed, shared bathroom with tub
- Bedroom 6 - 2 twin beds, en-suite bathroom with shower
- Bedroom 7 - 2 twin beds, shared bathroom with tub

Living area

- Large living area with dining area, TV corner, sitting area and a relaxation area which leads out to the veranda with dining tables
- Equipped kitchen
- Room for board games

Home entertainment

- Table tennis
- Board games



Outdoor area

- Private pool
- Gazebo with outdoor furniture
- Sun beds
- Tennis court
- Outdoor dining area
- Stone BBQ

General

- Air conditioning in the bedrooms on the second floor
- WiFi
- Bedding and towels provided
- Private parking
- Hairdryer in each bathroom
- Washing machine
- Iron and ironing board
- Baby cot and high chair
- Valuables safe

Good to know

- Pets: Yes, small size. Acceptance of animals to the facility must be previously authorised by the owner upon communication of the number of animals, size and breed.
- 50 meters from the property, for the guests exclusive use, are 2 synthetic tennis courts with the possibility of transforming one of them into a five-a-side football pitch. Also at your disposal are 4 tennis rackets.
- The pool is open from the last Saturday of April until the first Saturday of October.

Price includes

- Utilities: water - gas for kitchen use - electricity
- Weekly linen
- Initial and final cleaning



Not included in price

- Mandatory extra cleaning in case of animals (30,00 Euros/week/animal)
- Tourist tax (where applicable)

Extras on request

- Extra cleaning (22,00 Euros/hour per cleaner)
- Extra linen (15,00 Euros per person)
- Heating (on consumption up to date market prices)
- Tennis lesson (price to be assessed according to guests request)

Places of interest

- Airport: Firenze 25 km, Pisa 85 km, Roma 290 km, Milano 304 km, Bologna 115 km.
- Train station: Firenze Santa Maria Novella 15 km
- Shops and services: Impruneta 3 km, Tavarnuzze 3 km
- Beaches: Tyrrhenian Sea 100 km
- Attractions within 100 km: Firenze 15 km, Siena 65 km, Volterra 70 km, San Gimignano 47 km, Greve in Chianti 16 km, Montalcino 105 km, Tirrenia 100 km, Vinci 50 km, Montecatini Terme 60 km, Pisa 100 km



