

📍 Surin

Surin 4453

🛏 4 🍽 4 👥 10



This vibrant, modern holiday home offers magnificent sea views and an exclusive hillside perch on Phuket's west coast. Just minutes away from the white sands of Surin Beach and the island's best dining spots and leisure activities, the fully-staffed, four-bedroom Villa Napalai Surin is ideal for families and groups seeking a fun-filled tropical escape.

Imagine waking up to an ocean view, luxuriating by the pool or being treated to a private spa session. This Phuket luxury retreat features four spacious bedroom suites, a gym, spa and children's play room, plus a beautifully designed games room with a pool table and bar.

Villa Napalai is set on a hillside in the Surin Heights private estate, directly across the road from the south entrance to Surin Beach. Surin's soft sands are lined with some of Phuket's best restaurants, bars and beach clubs, while a bit further beyond is the The Plaza Surin boutique shopping centre and a choice of restaurants and shops from simple noodle stands to upscale wine bars. Laem Singh Beach, a pretty white-sand cove that's hidden away at the bottom of a jungly hill, is found within a 10-minute walk south along the coastal road towards Kamala Beach. For more dining choices, family activities, golf and water sports, the nearby Bang Tao and Kamala beaches are easily reached by car.

Features and amenities

Location

Surin Beach, Phuket, Thailand.

Capacity

8 people (1 king-bedded master suite; 2 queen-bedded rooms; 1 twin-bedded room). One extra bed may be set up on guest request for an additional adult and a sofa bed may be used by a child at extra charge.

Living areas

Living room; indoor dining for 8; furnished pool terrace; entertainment room with bar; study; children's playroom; barbecue area with table for 8.

Pool

8.5 x 2m.

Staff

Villa manager; 2 housekeeping; chef; 24-hour estate security. Babysitter, masseuse, car and driver on request (extra).

Dining

Variety of Thai and Western dishes, seafood barbecues. Special dietary requirements catered for.

Communication



Landline for local calls; IDD on request (extra); WiFi internet; printer and fax for guest use.

Entertainment

Flat-screen TVs with international channels in living room and gym; DVD players; iPod dock and MP3 player in living room and master bedroom; pool table.

For families

Bright playroom with slide, table, bean-bags and assorted toys.

Spa

Local spa and beauty specialists may be brought in to provide massage, manicure and other treatments (prices on request) in the villa's own private spa room. Suggested treatments include: Traditional Thai massage, Manicure/Pedicure and Foot Reflexology.

Transport

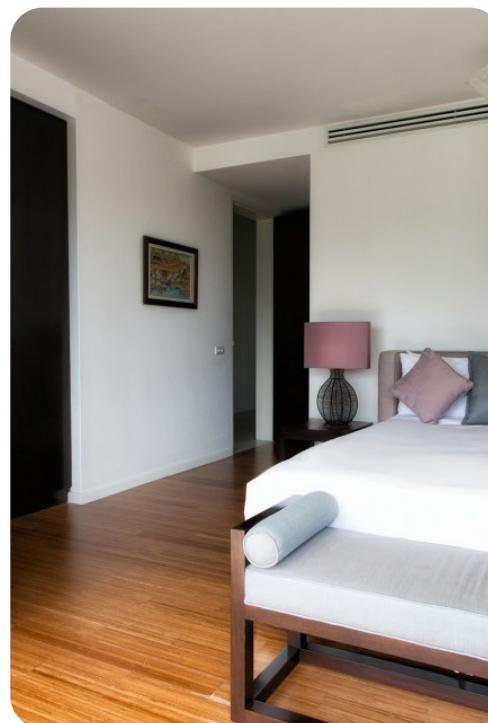
Car requirements and taxi pick-ups can easily be arranged with your villa manager.

Additional facilities

Gym; spa room with massage bed and shower.

Property area

500sqm (villa); 750sqm (land).



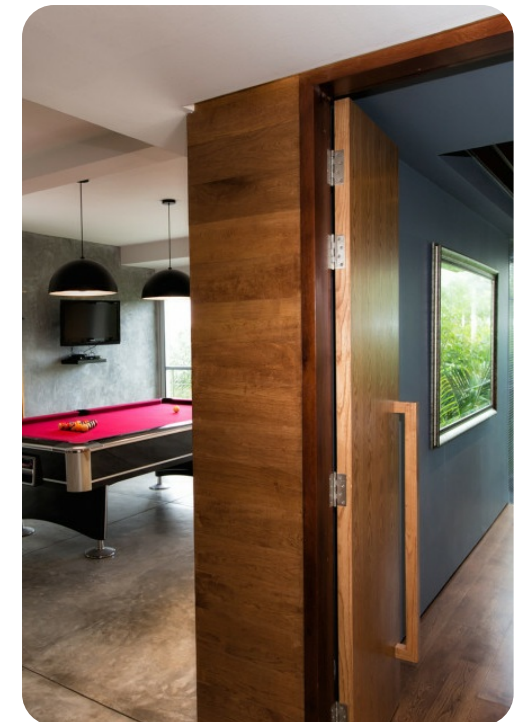
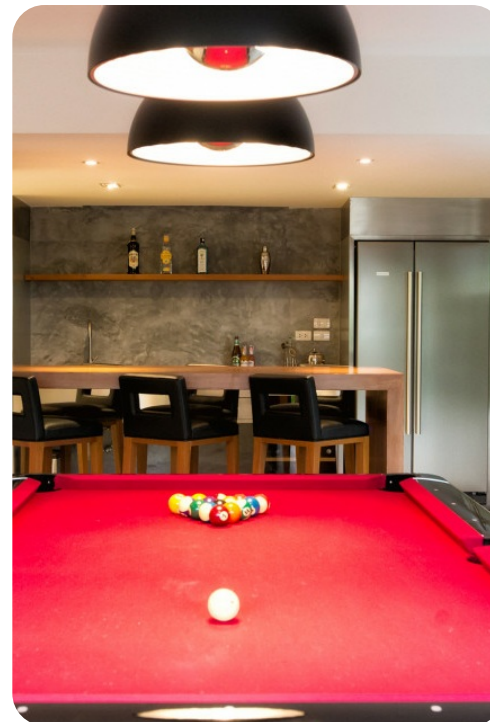
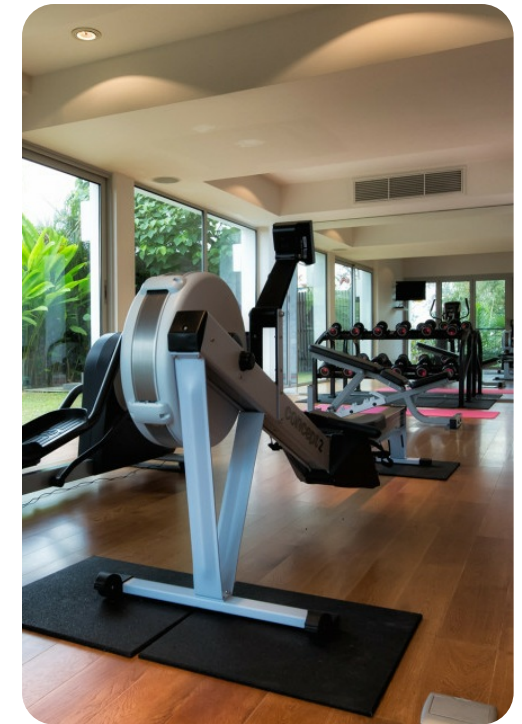
The layout

Indoor living

- Large spacious living room with adjoining dining room seating for eight
- Study Room with TV and entertainment unit, chairs and a work desk. WiFi connection available.
- Downstairs entertainment area/games room, with pool table, TV and a stainless-steel bar equipped with matching appliances
- Gymnasium equipped with a full set of free weights, cross-trainer, rowing machines and space for yoga

Outdoor living

- Sea-view pool terrace with a white terrazzo sundeck, sunbeds and a built-in sofa
- 8.5m swimming pool with a shady sala (gazebo)
- Landscaped and private garden
- A built-in cooking area and decked outdoor dining area with a table for eight



The rooms

Master bedroom

- Top-floor master suite with secluded balcony and built-in daybed
- King-sized four-poster bed with mosquito netting
- Dressing area and writing desk
- Ensuite featuring his-and-hers vanity sets, rain shower and Jacuzzi with ocean views
- Air-conditioned

Guest rooms

- Two queen-bedded guestrooms offering sea views with private balconies accessed via floor-to-ceiling glass doors
- Spacious wardrobes and seating areas
- Ensuites; one with bathtub and overhead shower, the other with rain shower
- Air-conditioned

Twin suite

- Located on the mezzanine level between the main and lower floors
- Twin beds with mosquito nets (bed rail available for younger guests)
- Ensuite bathroom equipped with shower and vanity

Location

Villa Napalai boasts one of the best locations in Phuket, only minutes' walk to the best beaches and dining spots on the island. Find some unique clothing, antiques and gifts in the boutique shops of Surin Plaza and at independent shops along the streets.

One of 9 villas within the exclusive Surin Heights villa estate, Villa Napalai sits perched on a clifftop, offering stunning views of Phukets' beach-lined west coast.

Guests are able to stroll down via the bottom entrance of the villa to the white sands of 800 metre long Surin Beach, which is a mere 2 minutes' walk away, and it's only 5 minutes' walk to the stunning beach of Laem Sing. Within 2 kilometres is the magnificent Bang Tao Beach, an even longer and quieter stretch of sand. This area is also home to the Laguna Phuket resort complex offering a wealth of water sports, golf, upscale dining and other leisure activities.



