

Discovery Bay

# Sugar Bay on the Beach

5 5.5 10



## Key features

- 5 bedrooms
- 5 bathrooms
- Sleeps 10
- Private pool
- Private beach
- Beachfront location
- Access to Puerto Seco Beach included

## Bedrooms

- Bedroom 1 - King-size bed; en-suite bathroom includes double vanity and walk-in shower. Access to balcony
- Bedroom 2 - King-size bed; en-suite bathroom includes walk-in shower. Access to balcony
- Bedroom 3 - King-size bed (convertible to 2 twins); en-suite bathroom includes walk-in shower. Access to balcony
- Bedroom 4 - King-size bed; en-suite bathroom includes walk-in shower. Access to terrace
- Bedroom 5 - 2 double beds; en-suite bathroom includes shower/bathtub combination

## Living area

- Vaulted living room with comfortable sofas
- Formal dining room. Access to verandah
- Fully equipped kitchen
- Additional living room upstairs with flat-screen TV and lounge seating. Access to balcony



## Outside area

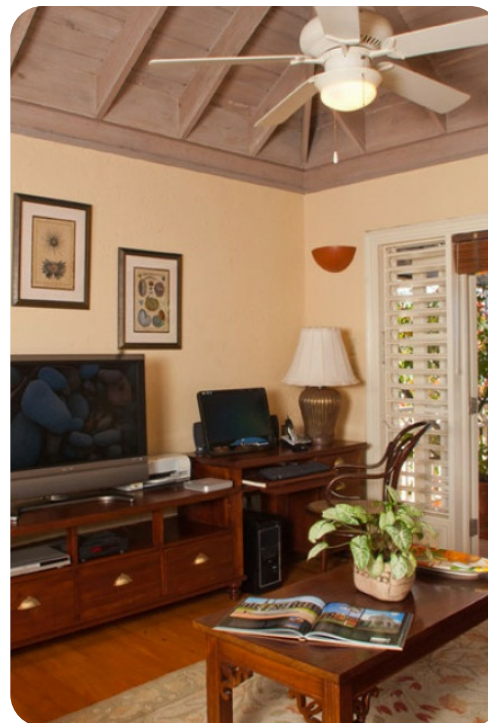
- Private infinity pool
- Hot tub
- Sunloungers
- Poolside pergola with lounge area
- BBQ
- Alfresco dining area
- Verandah with comfortable seating
- Landscaped gardens
- Private beach
- Boat dock
- Seaside gazebo with lounge seating
- Seafront terrace with alfresco dining area
- Complimentary sea kayaks and snorkelling equipment

## General

- Air conditioning
- Complimentary wifi
- 2 safes
- Bedding and towels included
- 2 cribs, pack n play and high chair available
- Private parking
- Available for weddings

## Staff\*\*

- Butler
- Cook
- Housekeeper
- Laundress
- Gardener



## Discovery Bay

Located on the Northern coast of Jamaica, Discovery Bay is a small town found in Saint Ann Parish, rich in history and full of breathtaking scenery. Believed to be the first landing site of Christopher Columbus when he arrived in Jamaica, this peaceful harbour town is now recognised for its family-friendly atmosphere, beautiful beaches and placid waters. Visitors to the area can enjoy the Puerto Seco Beach, which offers water sports rentals, or discover the nearby Green Grotto Caves or Columbus Park open-air museum. With lush tropical landscapes, white sand and turquoise waters, this stunning town is home to some of the most luxurious properties in Jamaica and with slightly less activities on offer compared to neighbouring destinations, Discovery Bay is the ideal location for a more relaxing and uncomplicated holiday.

**\*\*Recommended staff gratuity at the end of your stay is 10% of the villa rental in High Season, 15% in Low Season, divided among your staff members in accordance with the Gratuity Guide you'll find in your Welcome Book at the villa. Plan to pay your grocery and gratuity monies in cash: US dollars or Jamaican dollars.**

**\*\*Please Note: Balance for Festive reservations is due 121 days prior to arrival date**



