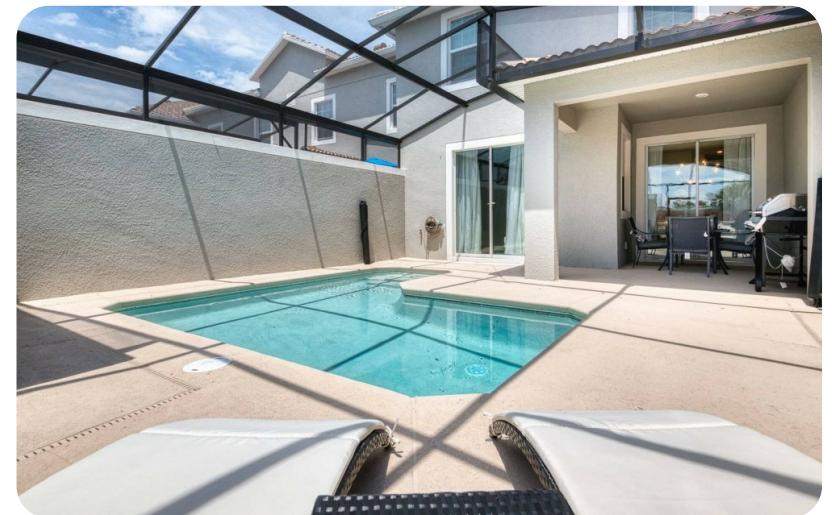


📍 Storey Lake Resort

# Storey Lake Resort 214

🛏 4 🪑 3 👤 10



## Key Features

- 4 bedrooms
- 3 bathrooms
- Sleeps 10
- Private plunge pool
- Access to resort amenities

## Bedrooms

### Ground floor

- Bedroom 1 - King-size bed; adjacent bathroom includes single vanity and walk-in shower

### First floor

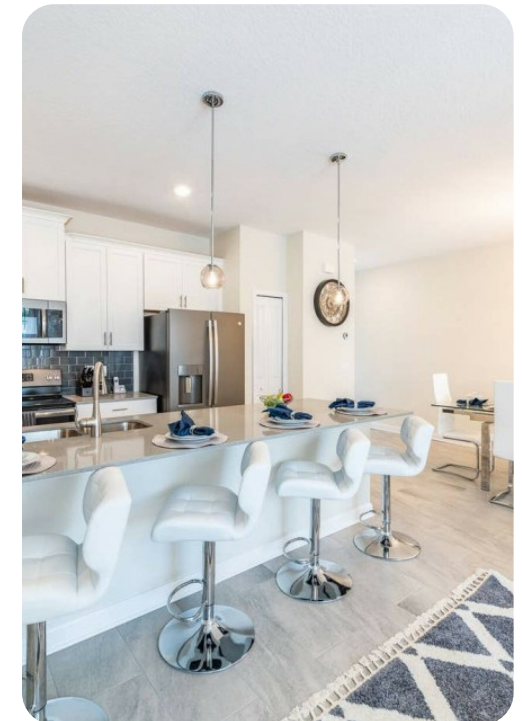
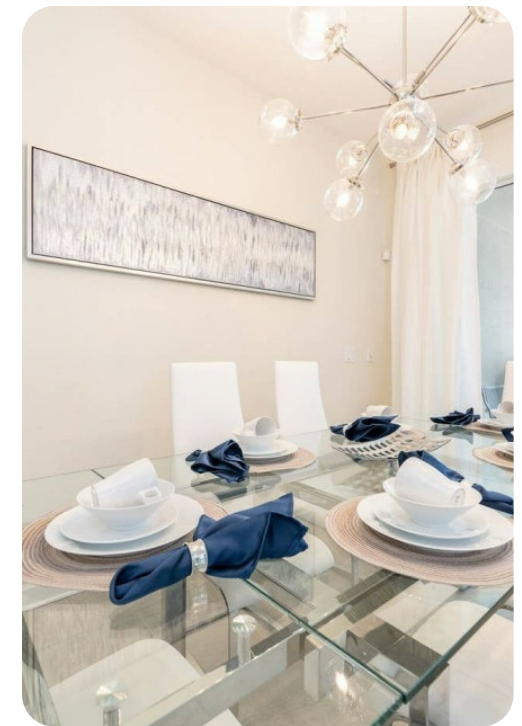
- Bedroom 2 - King-size bed; en-suite bathroom includes double vanity and walk-in shower
- Bedroom 3 - 1 double bed and 1 twin bed; adjacent bathroom includes double vanity and walk-in shower
- Bedroom 4 - 1 double bed and 1 twin bed; adjacent bathroom includes double vanity and walk-in shower

## Living area

- Open-plan living area
- Fully equipped kitchen
- Breakfast bar with seating
- Dining table and chairs
- Tastefully furnished living room with flat-screen TV and comfortable L-shaped sofa

## Pool area

- Private plunge pool
- Spillover tub
- Pool cage
- Pool fence
- Sunloungers
- Covered lanai with table and chairs



Home entertainment

- Flat-screen TVs in living area and all bedrooms

General

- Air conditioning throughout
- Complimentary wifi
- Bedding and towels included
- Private parking

Laundry room

- Washer and dryer
- Iron and ironing board

Children's equipment available for hire

- Crib
- Stroller
- High chair
- Pack and play

Resort facilities

Situated just 17 miles from Orlando International Airport, Storey Lake Resort is ideally located within close proximity to Orlando’s major attractions. Guests at this resort can enjoy full access to a range of first-class amenities based around the impressive clubhouse – The Hideaway. Here, you will find a 9-hole mini golf course, volleyball courts, a fully-equipped fitness center and kayak rentals. The resort also features a large communal pool and spa, waterslides and a lazy river where guests can enjoy a 5\* poolside dining and drinks service.



## Places of interest

- Supermarket - 1 mile
- Shopping mall - 2 miles
- Disney World - 5 miles
- Seaworld - 7 miles
- Universal Studios - 10 miles
- Legoland - 37 miles
- Airport - 17 miles
- Beaches - 69 miles

