

📍 Samur Ketewel

# Sanur Ketewel 5682 - Villa Samadhana

🛏 5 🚿 5 👥 10





Villa Samadhana is the pinnacle of style, service and spaciousness. Set amongst sprawling lawns and exotic tropical gardens, this expansive villa, designed by one of Asia's top architects, combines modern luxury with traditional elegance to create a sophisticated sanctuary perfect for weddings and special events. Located in the sleepy seaside village of Ketewel, on Bali's south-east coast, the property offers stunning ocean views across neighbouring rice fields. Featuring five luxurious bedrooms, an open-sided living and dining pavilion, restaurant-grade kitchen, entertainment lounge, 25-metre lap pool and a full complement of staff, this palatial villa is sure to impress.

Villa Samadhana is located within a rural Balinese village that has seen many luxury holiday villas built near the beach over the last five years. Ketewel's well-maintained street is lined with mature trees and local homes. You will see elderly women picking frangipani for their daily offerings, men of all ages sitting on simple bamboo structures along the road, catching up on the day's events, and children happily playing on the black sand beach. Pabean Beach is nice to walk on in the early mornings and at sunset when temperatures are cooler. This can be a wild beach, so beginner swimmers are advised to stay in shallow areas where they can touch the sandy bottom. Intermediate and advanced surfers will enjoy waves all year long.

## Features and amenities

### Location

Ketewel, Sanur, Bali, Indonesia.

### Neighbourhood

Sukawati 7km; Sanur 13km; Ubud 17km.

### Capacity

10 people (1 king, 3 queen, 1 twin). Extra bed is available on request at additional cost.

### Living areas

Open-sided living/dining pavilion; large entertainment pavilion; air-conditioned TV lounge; guesthouse lounge.

### Pool

A 25m swimming pool.

### Staff

Villa manager; chef, assistant chef; butler; driver; 2 villa attendants; 4 gardeners/ pool attendant; 4 security guards. Masseuse and babysitter on request.

### Dining

Western, Asian, vegetarian and children's menu. Requests accommodated (including special diets).





### Communication

Free WiFi internet access; PABX system; landline for local calls; mobile phone coverage.

### Entertainment

Satellite TV and DVD players; surround-sound system; CD player; iPod dock, billiard table.

### Events

Weddings and events for up to 100 people can be accommodated.

### For families

Baby cot; high chair; car seat; DVDs; books; games, pool toys.

### Transport

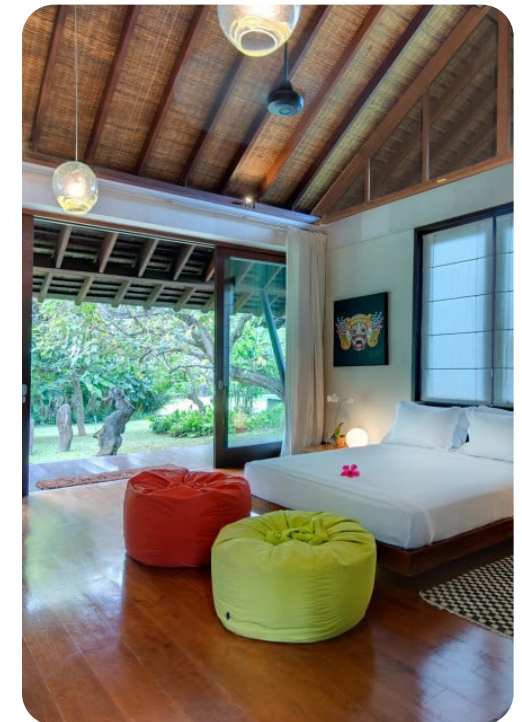
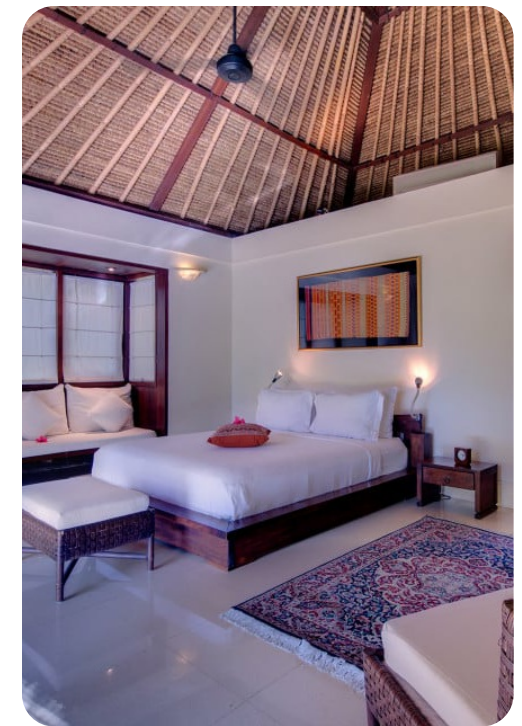
Car and driver on standby for up to 8 hours at a special daily rate of USD35++ (excludes petrol).

### Additional facilities

Back-up generator and safes.

### Property area

7,400sqm.





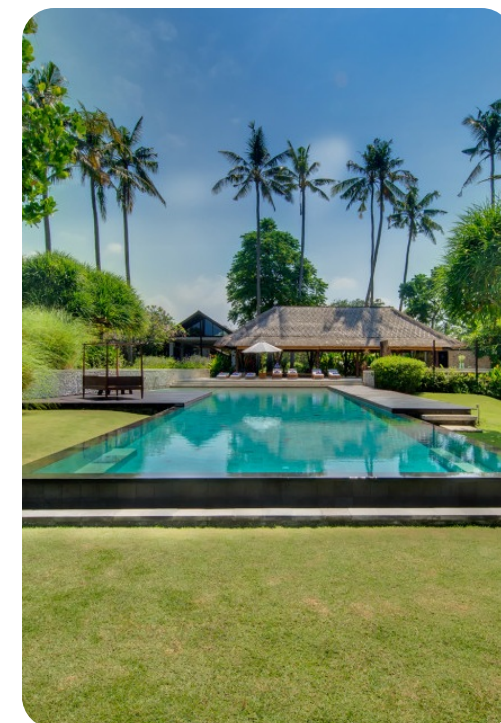
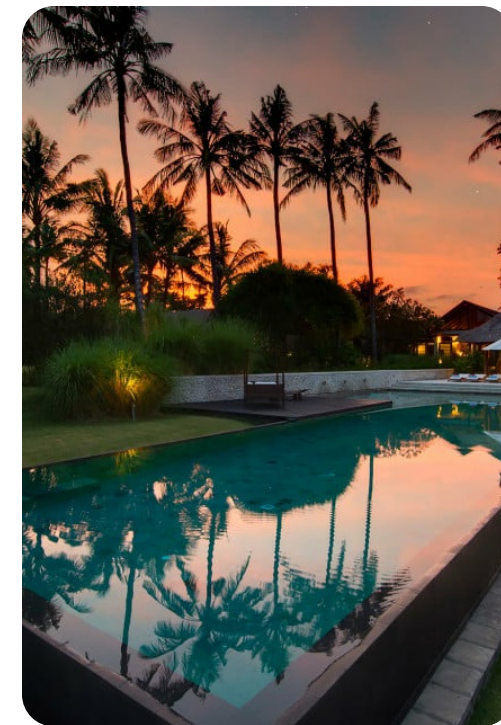
## The layout

### Indoor living

- Large open-sided living and dining pavilion with traditional with polished terrazzo floors, high vaulted ceilings with views over the rolling lawns
- A variety of indoor lounging areas and a solid teak dining table seating twelve
- Air-conditioned TV lounge with large flat-screen TV, DVD player and surround sound system (which also services the lounge and dining area). This room opens onto a timber deck
- Large restaurant-grade kitchen featuring polished granite worktops, commercial stove, wok burner. This is one of the largest kitchens on the island and opens out onto a timber deck area
- Entertainment pavilion on lower level with ocean views featuring, an alang-alang thatched roof and Palimanan stone floor with billiard table, TV, DVD and stereo system, sofa polished concrete bar stools and washroom

### Outdoor living

- 25m infinity swimming pool with spectacular ocean views and features shallow end for children
- Poolside deck with sun loungers and daybeds
- Large stone terrace featuring stone table seating 14 guests
- Stunning landscaped gardens designed by one of Bali's premier landscape architects featuring manicured lawns, running water features, exotic trees and flowering plants.
- Expansive lawn area which is perfect as both a playing field for children or to hold a wedding or party





## The rooms

### Master suite

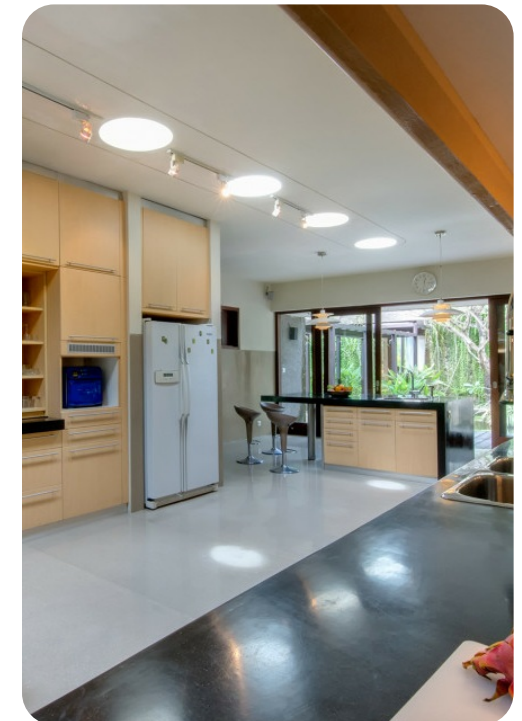
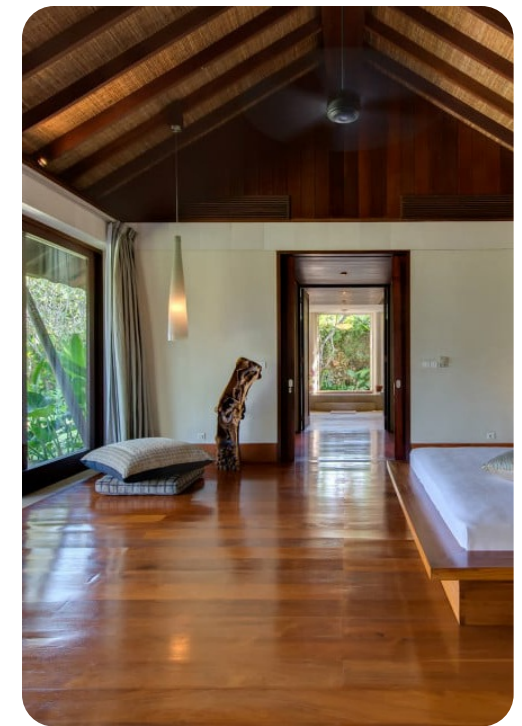
- Housed in its own pavilion separated from the living and dining area
- King-sized bedroom with vaulted ceiling, dark teak floors, glass doors leading out onto a private deck with garden and ocean views
- TV lounge with comfortable sofas, large flat-screen TV with DVD player
- Small reading room which 'floats' above the fish pond with glimpses of the pool
- Huge dressing room
- Semi-open ensuite bathroom with large rectangular terrazzo bathtub, his-and-hers vanities, and walk-in rain shower
- Private garden
- Air-conditioned

### Guest bedrooms 1 and 2

- Both guestrooms are housed in a separate pavilion adjacent to the dining area - designed for children but flexibly accommodate adults
- One room has a queen-sized bed with large flat-screen TV and DVD player, while the other one has twin beds and a small outdoor balcony
- A corridor with built-in-ropes connects the two bedrooms while also giving access to the shared bathroom
- Shared bathroom features grey slate walls and flooring, indoor terrazzo bathtub and walk-in shower, additional outdoor shower with water feature
- Large shared wooden deck
- Air-conditioned

### Guest suites 1 and 2

- Two-bedroom guesthouse located 50m from the main house for privacy
- Queen-sized beds complimented by light and airy cream walls and teak floors
- Garden bathrooms with indoor shower and glass sliding doors leading onto a wooden deck
- Adjoining living area for the two rooms
- Self-contained kitchen with breakfast bar and stools





## Location

Villa Samadhana is located in the sleepy seaside village of Ketewel, 13 kilometres from Sanur along Bali's south-east coast. Hidden behind coral-limestone walls a few hundred metres from the glistening black shores of Pabean Beach, the villa offers ocean views from the pool area and master bedroom, as well as glimpses of Mount Agung in the distance.

Surrounded by rice fields, tobacco plantations, papaya, banana and coconut groves this is still a very traditional area untouched by tourism, however access to the bypass means it is only a ten-minute drive to Sukawati's art and craft market, fifteen minutes to the cafes and restaurants of Sanur and 30 minutes to the cultural capital of Ubud.

Ketewel itself is the birthplace of the celebrated Legong Bededari Dance, and the neighbouring village of Saba produced the finest Legong dancers on the island. Pabean was once a small port through which oriental traders brought their products; at low tide you can still see the structure of the old harbour, and a Chinese cemetery is located nearby. Balinese Hindu purification ceremonies are held beside the ocean at the sacred Pura Segara sea temple, and the glistening black sandy stretch of coastline is popular with surfers and beachcombers, but swirling currents and a lack of lifeguards make it unsuitable for swimming.

## Places of interest

- Pabean Beach 0.10 km
- Sabang Bay Riding Stables 3.00 km
- Sukawati Art Market 7.00 km
- Bali Safari & Marine Park 7.00 km
- Sanur 13.00 km
- Ubud 17.00 km
- Seminyak 24.00 km
- Denpasar International Airport 27.00 km
- Sideman 27.00 km
- Padang Bai 29.00 km
- Candidasa 47.00 km





