

📍 San Diego

San Diego 327

🏠 4 🛏 3.5 👤 10 📏 2500 sq.ft



Key features

- 4 bedrooms
- 3.5 bathrooms
- Sleeps 10
- Bedrooms feature ocean-view balconies
- Beachfront fire pit and BBQ
- Close to restaurants and shops
- Attached two-car garage

Home layout

Ground level

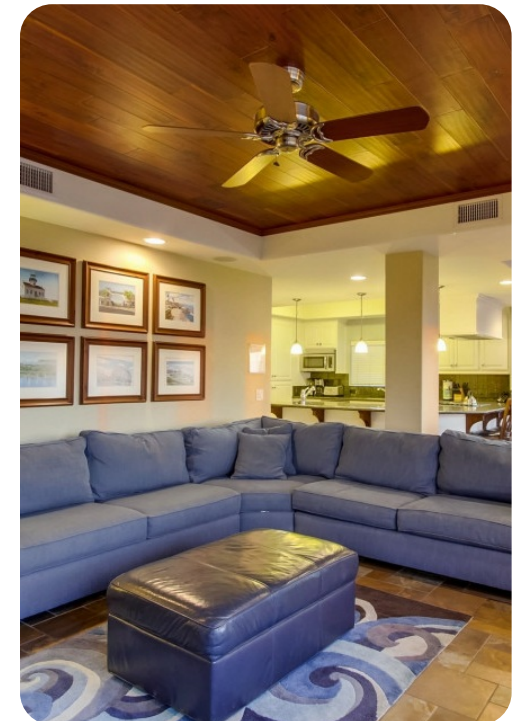
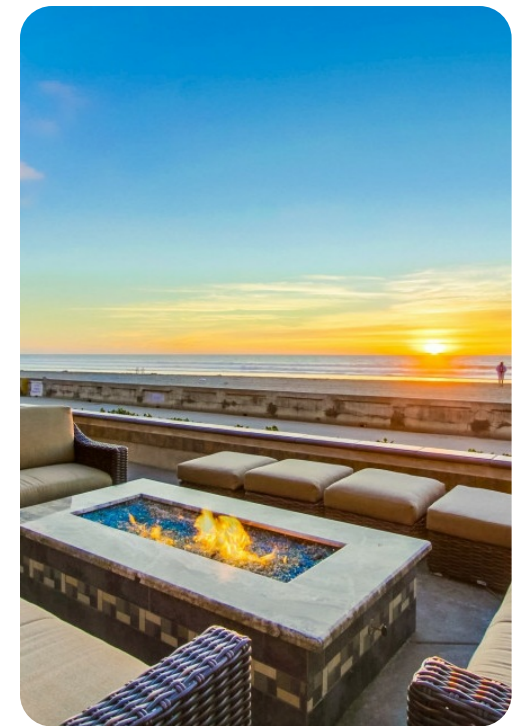
- Living room
- Dining room
- Kitchen
- Half bathroom
- Bedroom 1: King bed (sleeps 2) and TV
- En-suite bathroom with shower and jetted tub
- Beachfront patio with fire pit and lounges
- BBQ grill and island bar area

Second level

- Bedroom 2: King bed (sleeps 2), TV and balcony
- Bedroom 3: 2 Queen beds (sleeps 4), TV and balcony
- En-suite bathroom
- Bedroom 4: Double-size bunk bed (sleeps 2-4), TV and balcony
- Hall bathroom near bedrooms 2 and 4

Outdoor amenities

- Beach-level patio with fire pit
- Built-in BBQ and island bar



General

- Air conditioning throughout
- Complimentary wifi
- Bedding and towels included
- Two-level condominium home
- Smoking and pets are not permitted
- Ages 25+ unless family groups

Location

This home is truly a paradise at the water's edge and is perfectly located in Mission Beach between Crystal Pier to the north and the famed Belmont Amusement Park and roller coaster to the south. It's just a short walk to restaurants, markets, local coffee, beach boutiques, bike, and beach rentals and more.

Places of interest

- Balboa Park and Museums
- Belmont Park
- Cabrillo National Monument
- Gaslamp Quarter/Downtown
- La Jolla Cove
- Mount Soledad Veterans Memorial
- Old Town San Diego State Park
- San Diego Zoo
- SeaWorld San Diego
- Seaport Village
- Torrey Pines State Natural Reserve
- USS Midway / Seaport Village



