

**Region:** Phang Nga **Bedrooms:** 6 **Sleeps:** 12 **Bathrooms:** 6

Featuring floor-to-ceiling glass and a modern, open-plan design, the stunning beachfront villa faces Natai Beach, a 10km stretch of unspoilt coastline backed by a lush rural landscape, just half an hours drive from Phuket airport. Bordering the 25m pool is a timber sundeck and beachfront lawn, where a peaceful gazebo invites guests for sea-breeze-cooled nap or a sunset cocktail overlooking the glittering blue of the Andaman Sea. This spacious 6-bedroom villa boasts chic indoor and outdoor living and entertaining areas, and is staffed with a private chef, manager and housekeepers. An idyllic destination for families and a dream wedding venue.

On the south-west coast of Phang Nga province, just over the bridge from Phuket, Natai Beach is a sleepy stretch of powder-soft white sand that has been shaken awake in recent years by those seeking a luxurious yet peaceful escape. Lining the 10-kilometre-long beach are some of Thailand's most exclusive private villas and resorts, yet interspersed with these luxury hideaways are rubber plantations, coconut groves and water buffalo fields, giving Natai a distinctive blend of rugged rural landscapes and cutting-edge holiday homes that somehow coexist without imposing on one another. The beach itself is happily free of the jet ski rentals and braying vendors that blight so many sandy shorelines in the Phuket region, and visitors here might walk for hundreds of metres without seeing another soul. Kokkloy, about five kilometres away, is a small but bustling town with banks, local shops, markets and a mid-sized supermarket where provisions may be sourced. Those seeking nightlife excitement, shopping centres and a greater range of restaurants and activities will need to travel by car 20 to 40 kilometres south to Phuket.

## Features and amenities

### Location

Natai Beach, Phang Nga, Phuket, Thailand.

### Capacity

12 adults (2 master bedrooms and 1 guestroom with king-size beds; 3 guestrooms - 1 with a queen bed and 2 with twin beds).

### Living areas

Living room; TV/family room; indoor dining for 14; guest kitchen;



poolside dining area with barbecue; sun deck; garden gazebo.

### Pool

25m x 6m x 1.3m.

### Staff

Villa manager and concierge service; two full-time housekeepers; private chef; estate security. Additional staff (babysitter, masseuse) available on request at extra charge.

### Dining

The private chef at Villa Cielo specialises in traditional Thai cuisine and seafood. Daily continental breakfasts are included.

### Communication

Complimentary WiFi throughout the villa.

### Entertainment

Apple TV; Teatro audio system; TV/DVD player; board games and toys.

### For families

With two twin-bedded rooms, plenty of indoor and outdoor space and the beach on its doorstep, Villa Amarelo is an ideal option for families. A baby cot and a high chair are available on request.

### Spa, gym and yoga

Complimentary use of the estate's well-equipped gym; yoga and masseuse can be arranged for an additional cost.

### Transport

Airport transfer and private chauffeur service available (extra charges apply).

### Weddings and events

Events for up to 80 people seated and 120 standing can be arranged at



Cielo with prior notice (event fee applies).

### Additional facilities

Trampoline; bicycles; standup paddle boards; boogie boards; Mahjong table; foosball; football/soccer goal post; basketball hoop, badminton net; pool table; ping pong table and volleyball equipment; safety deposit boxes.

### Property area

823sqm (villa); 3,841sqm (land).

### The layout

#### Indoor living

- Open living room incorporating games area with pool table
- Glass-walled dining pavilion seating 14
- TV/family room with home theatre

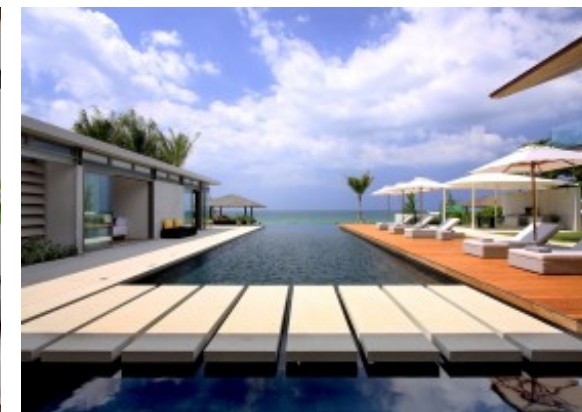
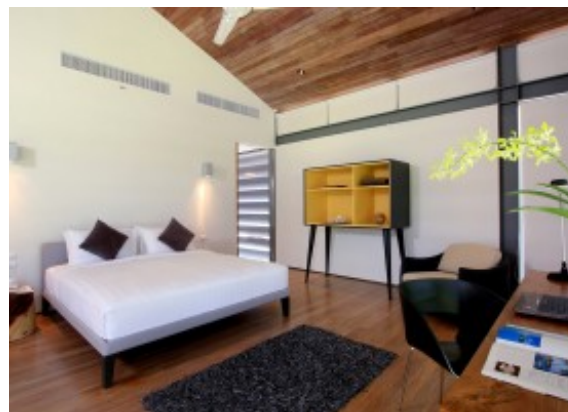
#### Outdoor living

- 25-metre infinity pool
- Sun deck
- Poolside party area with barbecue
- Canopied dining table seating 12
- Garden gazebo
- Large lawn with trampoline and space for outdoor play

### The rooms

#### Master bedroom 1

- Upper-floor bedroom with breathtaking sea views and private balcony
- King-size bed, home theatre system and Apple TV
- Sitting area with comfy armchairs
- Large ensuite bathroom with double vanity and shower
- Ceiling fan and air conditioning



## Master bedroom 2

- Ground-floor bedroom facing the ocean and pool
- King-size bed, home theatre system and Apple TV
- Work desk and lounge chair
- Ensuite bathroom with sunken terrazzo tub
- Ceiling fan and air conditioning

## Ground floor guest rooms

- One king-bedded room and one twin room
- Twin room
- Both with pool and garden views
- Shared bathroom with terrazzo tub
- Ceiling fans and air conditioning

## Upper floor guest rooms

- One queen-bedded room and one twin room
- Queen room
- Queen room with TV and Blu Ray DVD player
- Ensuite bathrooms with showers
- Ceiling fans and air conditioning

## Location

One of seven private villas on the exclusive Sava Beach Villas estate, fronts onto the golden sands of beautiful Natai Beach, a 10-kilometre stretch of pristine Thai coastline to the north of Phuket Island. The villa offers a tranquil hideaway in a rural setting but is only an hour away from the buzz of Phuket's beach resorts and less than half an hour from the island's international airport. Natai Beach is perfect for paddleboarding, kayaking and swimming and The Aleenta and Iniala Beach resorts, both just along the sand, offer award-winning dining.