

📍 Phang Nga

# Phang Nga 4409

🛏 4 🚿 4 👥 8





A sleek and chic 4-bedroom escape, the villa is just a few steps away from Natai Beach on the exclusive Sava Beach Villas estate, half an hours drive north of Phuket airport. Featuring open-plan living, contemporary artworks and floor-to-ceiling glass to maximise the sea and sunset views, the villa is stylishly landscaped with pockets of palm gardens and an 18-metre swimming pool. Ideal for families and friends seeking seclusion, the villa has plenty of space for lounging and entertaining, including a barbecue station and outdoor dining area where you can enjoy sundowners and seafood feasts personally prepared by your private chef.

Its getting harder to find in Thailand, but in the Natai Beach area the landscape remains rural and people lead a quiet, traditional way of life. Natai - whose soft, white, virtually deserted sands stretch for five-kilometres along the shores of the Andaman Sea - lies in the south-west of Phang Nga province, just over the bridge from Phuket. Even at the height of the season there are just a sprinkling of people on the beach, and absolutely no commercial activity. The rickety old pier that you can see from the villa is probably 100 or more years old, once a launching point for transporting tin (the main industry in the region before tourism).

You can drive for miles along the road that runs parallel to the beach, and at one point youll reach a public pier where, in the late afternoon, the locals come to relax while fruit and snack vendors set up their stalls. If youre on the search for dining outside the villa, you could try the well-regarded Aleenta resort or the new Iniala villa resort, which boasts a three Michelin-starred chef. Otherwise, the villa manager can direct you to some of the excellent local seafood restaurants where youll get to sample some authentic Thai flavours.

The nearest town is Kukkloy, about five kilometres away, where you can find basic provisions and banking services. Its a typical Thai town, lined with shop-houses, that so far remains free of any tourist activity. Those wishing to indulge in some golf, shopping or sightseeing can drive over the bridge to Phuket. It takes about an hour by car to reach the main resort areas and Phuket City. For diving and snorkelling, day trips to the Similan islands may be arranged, with boats launching from Khao Lak, about 45 kilometres to the north.

Features and amenities

Location

Sava Beach Villas, Natai Beach, Phang Nga, Phuket, Thailand.

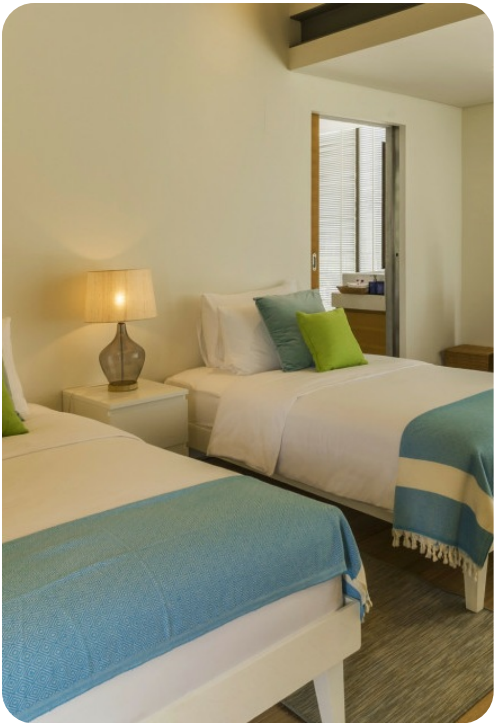
Capacity

8 guests (4 bedrooms: 2 master suites with king-size beds; 2 guestrooms with twin beds convertible to kings).

Living areas

Living room; TV room; indoor dining room with guest kitchen; canopied outdoor dining area and barbecue station; pool terrace.

Pool



18m x 4.2m x 1.3m.

### Staff

Villa manager; housekeepers; private chef; estate security staff. Additional staff (eg babysitter and masseuse) available on request for an extra charge.

### Dining

The chef specialises in traditional Thai cuisine. Daily continental breakfasts included.

### Communication

Complimentary WiFi throughout the villa.

### Entertainment

Satellite TV; DVD player and film library; CD player/stereo system; books and board games.

### For families

Ideal for families with young children. Two rooms are furnished with twin beds and other children's equipment (eg. baby cot, high chairs and pool toys) is available on request.

### Spa and gym

Complimentary use of the estate's well-equipped gym; masseuse can be arranged for an additional cost.

### Transport

Airport transfer and private chauffeur service available (extra charges apply).

### Weddings and events

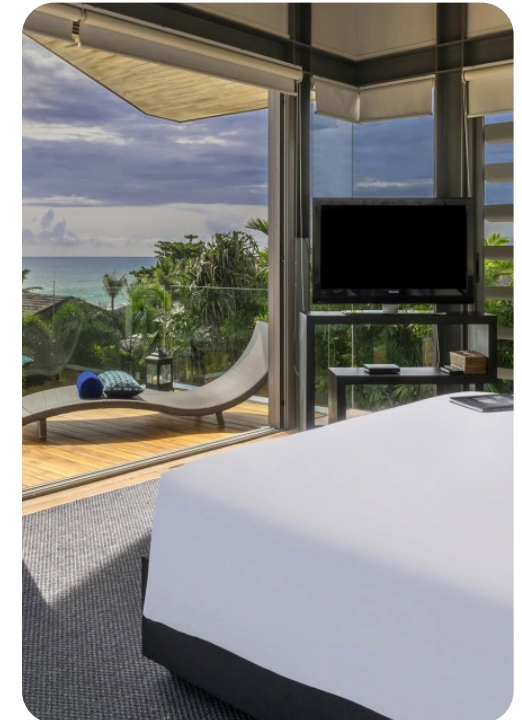
Events at the villa are available by request.

### Additional Facilities

Barbecue, bicycles, kayaks, table tennis, foosball table, badminton equipment, boogie boards, safety deposit boxes.

### Property area

601 sqm (villa); 642 sqm (land).





## The layout

### Indoor living

- Living room with plush sofas
- Dining room seating 8
- TV room with DVD player and games

### Outdoor living

- 18-metre saltwater infinity pool
- Pool deck with sun loungers
- Shaded dining area and barbecue station

## The rooms

### Master bedroom 1

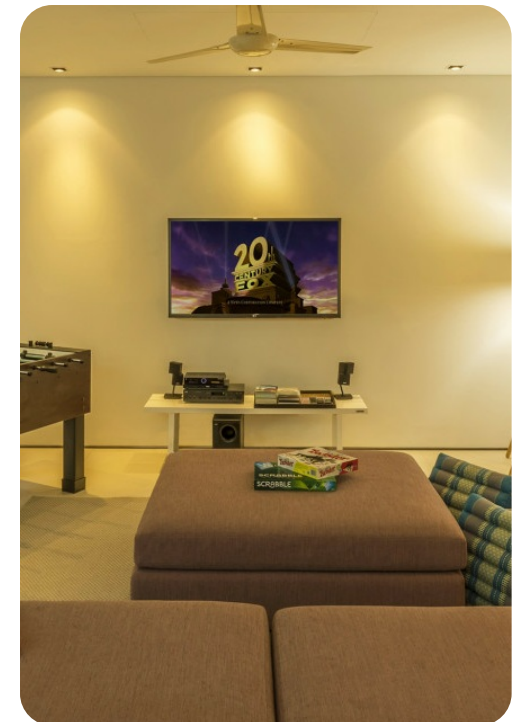
- Upper-floor bedroom with private ocean-view balcony
- King-size bed
- Dressing area, ensuite bathroom with shower
- Ceiling fan, air conditioning, TV

### Master bedroom 2

- Upper-floor bedroom with sea-view balcony
- King-size bed
- Ensuite bathroom with sunken terrazzo tub
- Ceiling fan, air conditioning, TV

### Guest bedrooms 3 & 4

- Two upper-floor rooms furnished with twin beds (convertible to king beds)
- One room with garden views, the other with partial sea views
- Shared bathroom with shower
- TV in one bedroom
- Ceiling fans, air conditioning



## Location

The villa is just steps away from the golden sands of beautiful Natai Beach, a 10-kilometre stretch of pristine Thai coastline to the north of Phuket Island. The villas offer a tranquil hideaway in a rural setting but is only an hour's drive from the buzz of Phuket's beach resorts and less than half an hour from the island's international airport. Natai Beach is perfect for paddleboarding, kayaking and swimming and The Aleenta and Iniala Beach resorts, both just along the sand, offer award-winning dining.

