

Region: Nusa Lembongan **Bedrooms:** 5 **Sleeps:** 10 **Bathrooms:** 5

Villa Voyage is aptly named. This private five-bedroom haven set beside a secluded white-sand beach, on the idyllic tropical island of Lembongan, just 30 minutes private boat ride from Balis Benoa harbour, transports guests to another time and place with its rustic nostalgia and sense of adventure.

Turquoise waters beckon divers, snorkellers and anglers; dramatic coastlines are a photographers dream, and seekers of luxury will be delighted by the villa itself, which offers elegant accommodation, a beachfront infinity pool and a team of efficient and friendly staff, including a chef who can turn his hand to anything from souffles to satay.

Villa Voyage is located on a small cove on the south-west shore of Nusa Lembongan - its pool deck opens directly onto a curved beach of fine white sand. From almost every room you can see the azure waves surging ashore and plumes of spray bursting skywards behind Devil's Tear, the limestone headland across the bay. On one side of the villa is the Sandy Bay Beach Club (conveniently, its restaurant, bar and spa is a hop and skip away) and, tucked along the cliff-top on the other side, are three or four (more modest) private villas and the popular Sunset Bar. Strong currents in the bay rule out swimming but a short 10-minute stroll south along the cliff-top path will bring you to Dream Beach with its safe swimming and a popular cafe.

Features and amenities

Location

Nusa Lembongan, Bali, Indonesia.

Capacity

10 adults (in 5 queen-bedded rooms with ensuite bathrooms).

Living areas

Double height open-plan sitting room; indoor dining for 12; outdoor dining for 10 in gazebo; pool deck with multiple seating.

Pool

12m x 5m.



Staff

Villa manager; operations manager; chef; butler; 2 housekeepers; gardener; pool attendant; guard providing night security. Masseuse, spa therapist and babysitters - extra, on request.

Dining

A wide variety of Western and International dishes. Suggestion menu. Requests accommodated (including special diets).

Communication

WiFi internet access; printer available for guest use.

Entertainment

iPod plus docking station; 60-inch flat-screen LED TV; Apple TV; DVD player and movies; books; games. Wall-mounted speakers with volume control for both inside and out.

Transport

Villa guests can reach Villa Voyage via the Sanur - Nusa Lembongan ferries which run regularly through the day. Guests arriving in Sanur later than 5pm will require overnight accommodation on Mainland Bali as crossings are not recommended at night. Your villa manager can help with ferry bookings (on guest account).

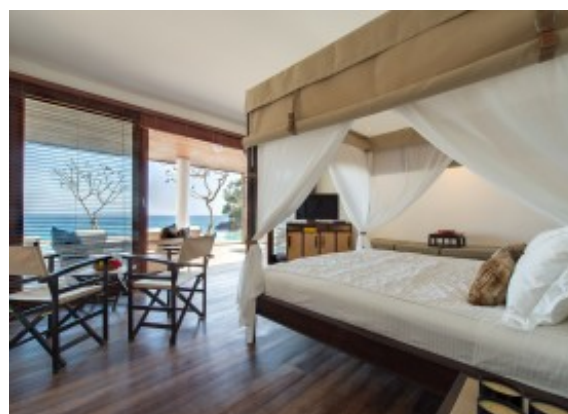
Additional facilities

A luxury buggy is included for arrival and departure transfers and can also be rented at other times (extra charge) also included is a private jukung outrigger for a one time 3 hour trip and can be rented at other times (extra charge).

The layout

Indoor living

- Open-plan living room with walls of glass doors leading onto the pool terrace giving guests the option of open-air or air-conditioned comfort
- Oversized cream sofas
- 60inch LED TV, Apple TV, DVD and iPod



- Two dining tables of reclaimed teakwood, seating six each
- Teakwood island serves as a buffet, bar and cooking station
- Fully-equipped chef's kitchen capable of serving 20 guests

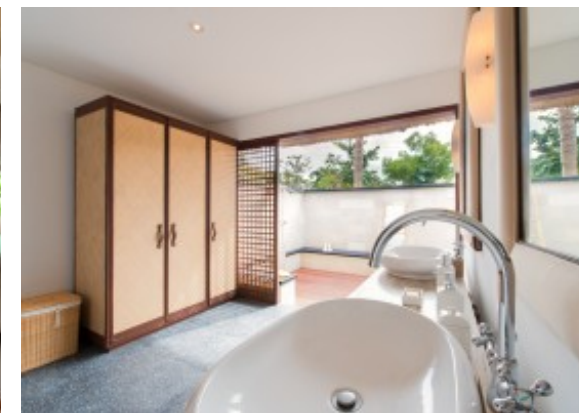
Outdoor living

- 12m x 5m free-form tension-edge swimming pool
- Expansive ironwood deck bridging the main living pavilion and the beach furnished with poolside beanbags, sun loungers and daybeds
- A shoreline pergola with oversized daybed and semi-circular seating area
- Gardens and lawn leading directly onto the beach

The rooms

Voyage mezzanine ocean suite

- Tented Safari-themed room with queen-sized bed under a tented canopy
- Triangular wall of glass opening onto a large private ironwood balcony
- Large open-plan ensuite with double basins and mirrors and glazed terrazzo enclosure with rain shower
- Air-conditioning and ceiling fan



Voyage master suite

- Tented Safari-themed room with queen-sized bed under a tented canopy with leather trim
- Large sliding doors open onto pool deck
- Flat-screen 40inch TV
- Dressing room
- Ensuite with double basins, patio with open-air shower and sculptured terrazzo bathtub
- Air-conditioning and ceiling fan



Voyage garden suite

- Four-poster queen-sized bed facing a small courtyard

- Furnished balcony
- Travelling desk and dressing table
- Large ensuite bathroom with rattan and leather wardrobes, double basins - set in a patio with open-air shower
- Air-conditioning and ceiling fan

Voyage garden pavilion suite

- Stand-alone harem- style pavilion suite on the white sands of the villa ground
- Queen-sized bed with crisp white linens
- Glass doors lead onto a private deck with ocean glimpses
- Ensuite

Location

Villa Voyage commands prime position on a small, sandy cove in the south-west corner of Nusa Lembongan; other than Nusa Dua on mainland Bali, from where a string of lights sparkle across the sea at night, the nearest landfall is Australia! Voyage is part of a small, exclusive community comprising a handful of private villas along the beach and raised on the cliff. Next door is the Beach Club at Sandy Bay with it's charming, quiet, beachfront restaurant and brand, new Glo spa. Across the bay is the spectacular rock formation of Devil's Tear, scene of crashing waves and plumes of white-tipped foam. A pleasant ten minute stroll along the cliff - top path - populated by pandan plants and the occasional cow - is Dream Beach with it's popular cafe and swimming beach; a fifteen minute walk in the other direction are the restaurants and bars of Mushroom Beach.