

📍 Nai Thon

Nai Thon 5455

🛏 5 🍽 5 👥 10



Villa Haleana is a vibrant five-bedroom holiday home with sweeping views over Nai Thon Beach on Phuket's peaceful northwest coast. Set in the ultra-exclusive Malaiwana hillside estate, the villa is an enviable choice for families and groups seeking complete serenity and five-star care. Let the days blissfully unfold with dips in the 18-metre pool, massage treatments in the lavish spa room, quiet reads in the study, workouts in the private gym or simply relaxing in the outdoor and indoor living areas. The plush bedrooms include two master suites with romantic marble bathrooms, while a manager, chef and housekeeping staff provide polished service.

Malaiwana estate is set on the hillside at the south end of Nai Thon Beach. A one-kilometre stretch of golden sand, water activities including standup paddle and snorkelling and low-key dining choices all lie within a few hundred metres of the estate. Situated just nine kilometres from Phuket airport, Nai Thon retains a sleepy village atmosphere. Though the beach could no longer be considered a 'hidden gem', it retains its lustre as a lesser-visited, picturesque spot along Phuket's peaceful north-west coast.

Features and amenities

Location

Nai Thon Beach, Thalang, Phuket, Thailand.

Capacity

10 people (2 master suites with king-sized beds; 3 guest rooms with king-sized beds convertible to twins). Extra mattresses can accommodate up to 4 additional guests (extra charge applies).

Living areas

Open-plan living and 12-seat dining room with ocean views and terrace access; adjoining guest kitchen and breakfast bar; two media rooms with TV/DVD facilities; study; spa room; gym; pool terrace with dining sala and sunbeds.

Pool

18 x 4m infinity-edged pool.

Staff

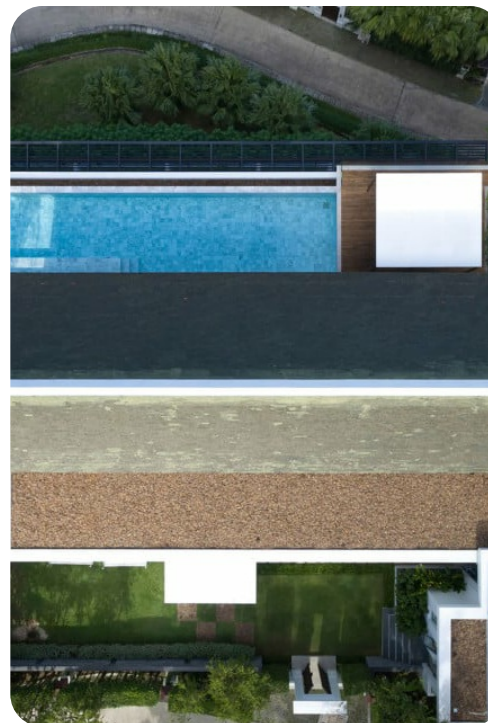
Villa manager; chef; housekeeping; service staff; pool maintenance. Babysitters and massage/beauty therapists available on request (additional charge).

Dining

Private chef prepares breakfast, lunch and dinner (Thai and western menus), catering to special dietary requests wherever possible.

Communication

Complimentary WiFi access; mobile phone, printer and scanner available for guest use.



Entertainment

TV/DVD facilities in all bedrooms plus the two media rooms.

For families

Villa Haleana welcomes families with children of all ages. Children's equipment can be hired from reputable local companies for a small extra charge.

Spa

Escape into the villa's opulent spa room and choose from a comprehensive menu of relaxing treatments carried out by professional beauty and wellness therapists (extra cost applies).

Transport

Additional car requirements and taxi pick-ups can easily be arranged with your villa manager.

Weddings and events

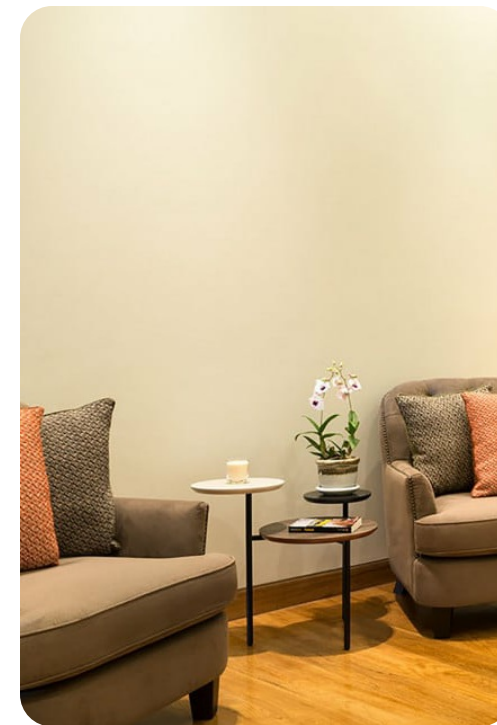
Events for up to 80 people can be arranged at Villa Haleana with prior notice (event fee applies).

Additional facilities

Safety deposit boxes; lift.

Property area

1,600sqm (villa); 1,800sqm (land).



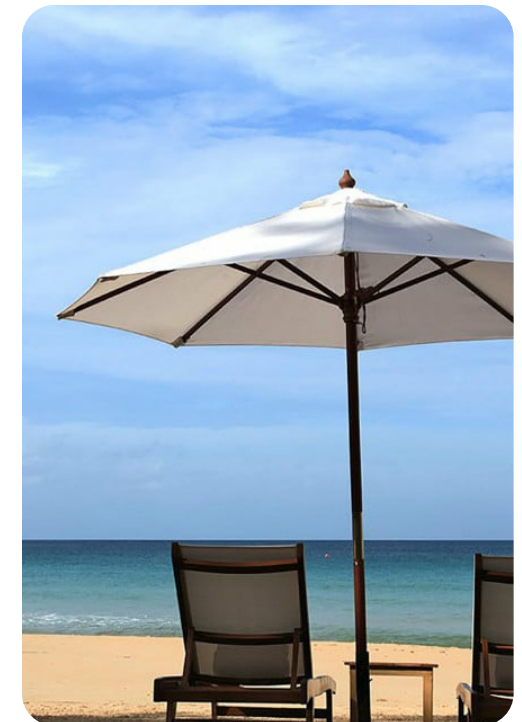
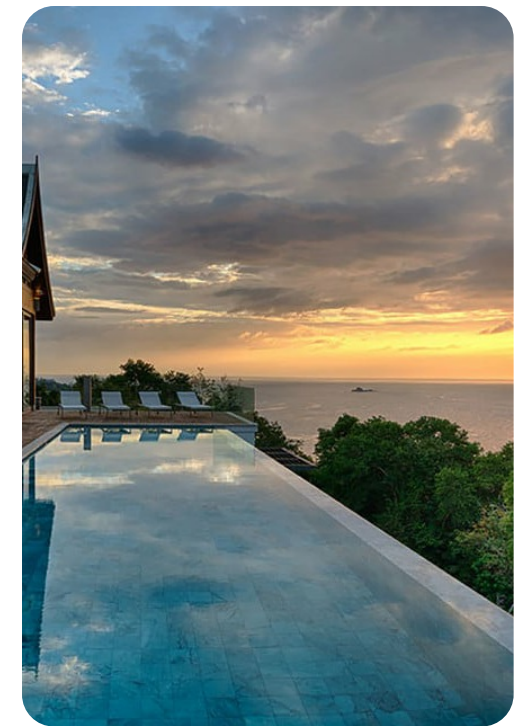
The layout

Indoor living

- Open-plan dining and living space in vaulted pavilion with superb views and pool terrace access
- Formal dining for 12 and smaller table for 4, both positioned for pool and ocean views
- Guest kitchen and breakfast bar with six stools, wine fridge
- Two media rooms with comfy lounge seating and TV/DVD entertainment systems
- Fully equipped gym with ocean views
- Sea-view study/play room with work desk, board games, books and toys
- Lavish marble spa room with massage beds, steam sauna, spa shower and large jacuzzi
- Air conditioning throughout

Outdoor living

- Pool deck with 18-metre pool and sun loungers
- Sala next to pool with outdoor dining for eight, separate dining table for four
- Tropical landscaped garden adjoining the parking area



The rooms

Master bedroom 1

- On the top floor of a peak-roofed pavilion, with panoramic sea views and direct pool access
- Bright bedroom suite with a king-sized bed, flat-screen TV, loveseat and bookshelf
- Spacious walk-through dressing room with wardrobe, make-up desk and warm lighting
- Marble ensuite bathroom with large terrazzo tub, double vanity and shower
- Adjacent media room that can convert into a child's bedroom
- Air conditioning

Master bedroom 2

- A grand bedroom complete with chandeliered marble entry hall
- Private balcony with sweeping ocean and beach views
- Comfortably furnished with a king-sized bed, loveseat and desk
- Marble ensuite bathroom with large tub, shower, double vanity, and two WCs
- Air conditioning

Guest bedrooms

- Three comfortable downstairs guest bedrooms with TVs and balconies positioned for optimal sea views
- King-sized beds (convertible to twins)
- Ensuite marble bathrooms with shower and double vanity
- Air conditioning

Location

The crystal-clear waters of the Andaman Sea and the powder-soft sands of Nai Thon Beach are in full view from every villa and residence at Malaiwana. Just a short walk or downhill drive away from the estate, this pristine one-kilometre-long beach on Phuket's peaceful northwest coast is perfect for sunning, swimming, snorkelling, stand-up paddling and sandcastle building. A tranquil village atmosphere prevails in this unspoiled corner of the island and the beach road is lined with low-key shops and cafes. Along the coast, numerous hidden coves and beaches are waiting to be discovered.

Just up the road, the Trisara Resort offers fabulous dining, and other chic nearby venues include Dream Beach Club at Layan Beach and the beachfront restaurants at Bang Tao, eight kilometres to the south.



