

📍 Nai Thon

Nai Thon 4457

🛏 4 🚿 4 👤 8



The Duplexes at Malaiwana are vibrant four-bedroomed residences just metres from Nai Thon Beach on Phuket's idyllic northwest coast. With panoramic sea views from their hillside setting, the Duplexes will appeal to families or groups of friends seeking complete serenity and five-star hospitality. Chill out in the 15-metre pool, entertain in the chic open-plan dining and living areas, or relax in one of the lavish ensuite bedrooms. A team of attentive staff - including a chef - provide first-class service, leaving you free to stroll to the beach, enjoy an evening cocktail and admire the sunset over the Andaman Sea.

Malaiwana estate is set on the hillside at the south end of Nai Thon Beach. A one-kilometre stretch of golden sand, water activities including standup paddle and snorkelling and low-key dining choices all lie within a few hundred metres of the estate. Situated just nine kilometres from Phuket airport, Nai Thon retains a sleepy village atmosphere. Though the beach could no longer be considered a hidden gem, it retains its lustre as a lesser-visited, picturesque spot along Phuket's peaceful north-west coast.

Features and amenities

Location

Nai Thon Beach, Thalang, Phuket, Thailand.

Capacity

8 people (2 master suites with king-sized beds; 2 ensuite guest rooms with twin beds one of which is convertible to king).

Living areas

Open-plan dining and living room with sliding doors to terrace; adjoining kitchen and bar; pool terrace with barbecue, outdoor dining table, lounge seating and sunbeds.

Pool

15 x 4m infinity-edged marble pool.

Staff

Manager; chef; housekeeping; service staff; pool maintenance. Babysitters and massage/beauty therapists available on request (additional charge).

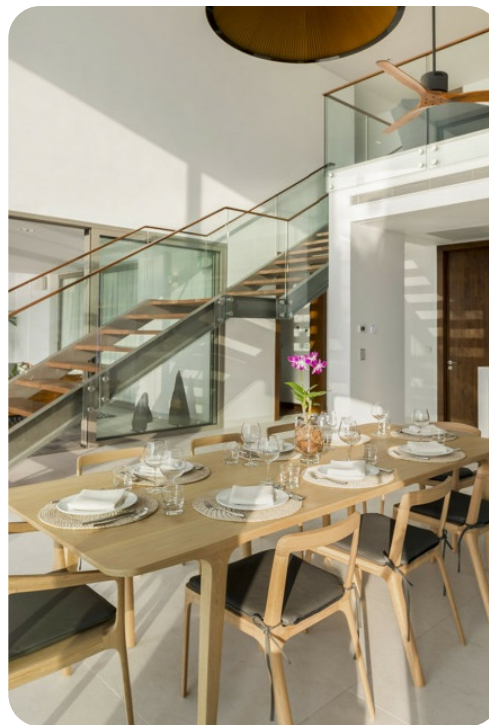
Dining

Private chef prepares breakfast, lunch and dinner (Thai and western menus), catering to special dietary requests wherever possible.

Communication

Complimentary WiFi access; mobile phone provided for guests.

Entertainment



Flat-screen TVs in the two master suites and one guest bedroom.

For families

The Duplexes welcome families with children of all ages. A good range of children's equipment can be hired locally on request (additional charges apply).

Spa

Choose from a comprehensive spa menu for a relaxing in-house treatment carried out by professional beauty and wellness therapists (extra cost applies).

Transport

Airport transfer, car hire and taxi pick-ups are easily arranged with your manager; complimentary buggy shuttle service between the estate entrance and Duplex.

Weddings and events

The Duplex residences are suitable for small gatherings only, but within the estate events for up to 80 people can be arranged at the 5 Bedroom Villa Haleana with prior notice (event fee applies).

Additional facilities

Barbecue; 4 safety deposit boxes.

Property area

600 sqm.

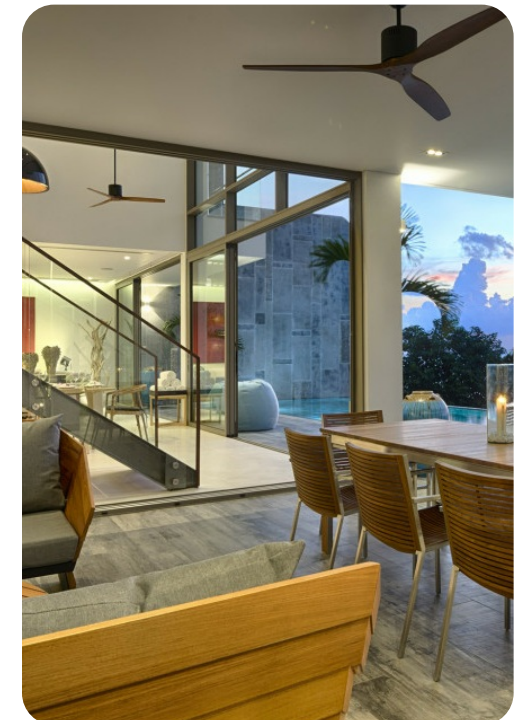
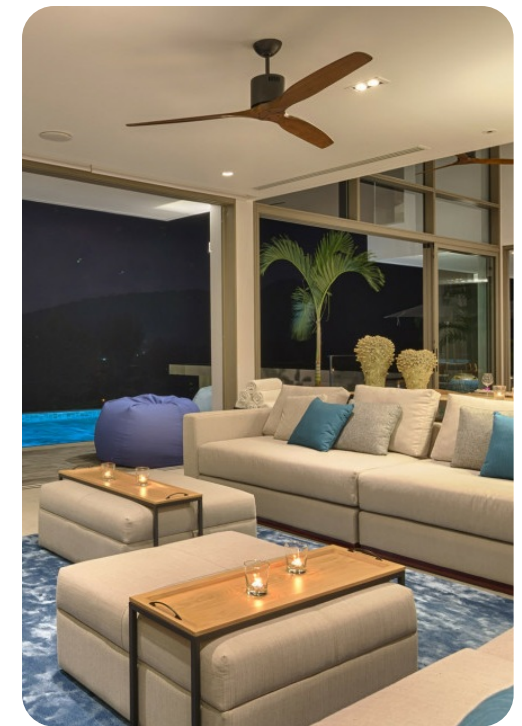
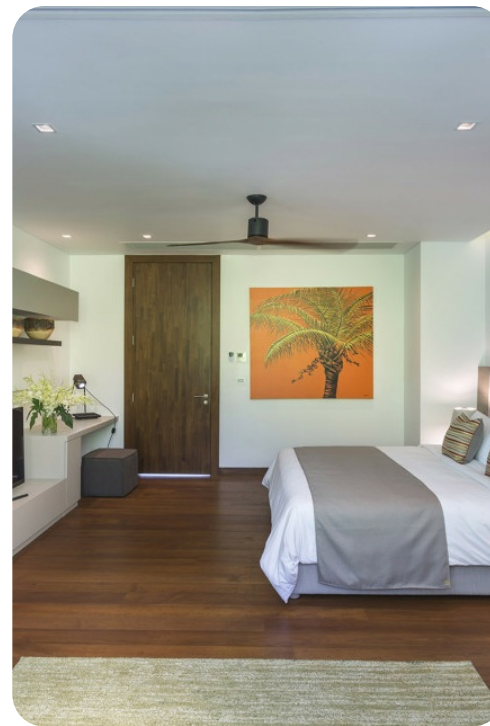
The layout

Indoor living

- Open-plan dining, living and bar area with sea views and access to pool terrace
- Bright modern kitchen with double fridge-freezer, oven and four-burner stove
- Upper floor sitting area with sofa and desk
- Air conditioning throughout

Outdoor living

- Terrace with 15-metre infinity-edged pool
- Alfresco dining table and barbecue
- Poolside sun loungers and sofa set
- Outdoor shower



The rooms

Master suites 1 and 2

- Two upper floor master suites with spectacular sea views from floor-to-ceiling sliding windows and balcony
- King-sized bed and loveseat or lounge chair
- Large ensuite bathroom in marble with a freeform bathtub, shower, double vanity set
- Large walk-in dressing area in Master Suite 1
- Ceiling fan, air conditioning, flat-screen TV

Guest bedroom 1

- Upper floor guest bedroom privately positioned at the rear of the Duplex
- Twin beds convertible to king-sized bed, mirrored wardrobe and desk
- Ensuite bathroom in marble with shower and single vanity set
- Ceiling fan and air conditioning

Guest bedroom 2

- Ground floor guest bedroom opening onto pool terrace
- Twin beds convertible to king-sized bed
- Ensuite bathroom in marble with shower and single vanity set
- Ceiling fan, air conditioning, flat-screen TV

Location

The crystal-clear waters of the Andaman Sea and the powder-soft sands of Nai Thon Beach are in full view from every villa and residence at Malaiwana. Just a short walk or downhill drive away from the estate, this pristine one-kilometre-long beach on Phuket's peaceful northwest coast is perfect for sunning, swimming, snorkelling, stand-up paddling and sandcastle building. A tranquil village atmosphere prevails in this unspoiled corner of the island and the beach road is lined with low-key shops and cafes. Along the coast, numerous hidden coves and beaches are waiting to be discovered.

Just up the road, the Trisara Resort offers fabulous dining, and other chic nearby venues include Dream Beach Club at Layan Beach and the beachfront restaurants at Bang Tao, eight kilometres to the south.

Malaiwana is an easy 20-minute drive from Phuket International Airport.

