

📍 Grenada

# Mount Hartman Bay Estate

🏠 16 🚗 16.5 👥 32





Key features

- 16 bedrooms
- 16.5 bathrooms
- Sleeps 32
- 2 private infinity pools
- Private pool
- 2 private hot tubs
- Fully staffed
- Direct beach access
- Ocean views
- Private use of estate amenities

This villas of this estate can be booked individually. Please see *The Main House*, *The Beach House* and *The Bay View Villa* for details.

Bedrooms

The Main House

Main villa

- Bedroom 1 - King-size bed; en-suite bathroom. Access to private balcony.
- Bedroom 2 - King-size bed; en-suite bathroom. Access to private balcony.
- Bedroom 3 - King-size bed; en-suite bathroom. Access to private balcony.
- Bedroom 4 - King-size bed; en-suite bathroom. Access to private balcony.
- Bedroom 5 - King-size bed; en-suite bathroom. Access to private balcony.
- Bedroom 6 - King-size bed; en-suite bathroom. Access to shared terrace.
- Bedroom 7 - King-size bed; en-suite bathroom. Access to shared terrace.

Folly Tower

- Bedroom 8 - King-size bed; en-suite bathroom. Access to private balcony.



## The Beach House

### Ground floor

- Bedroom 9 - King-size bed and sofa bed; en-suite bathroom. Access to swimming pool.
- Bedroom 10 - King-size bed and sofa bed; en-suite bathroom. Access to private garden.

### First floor

- Bedroom 11 - King-size bed and sofa bed; en-suite bathroom
- Bedroom 12 - King-size bed and sofa bed; en-suite bathroom



## The Bay View Villa

### Ground floor

- Bedroom 13 - King-size bed; en-suite bathroom. Access to private balcony.
- Bedroom 14 - 2 twin beds; en-suite bathroom. Access to private balcony.
- Bedroom 15 - 2 twin beds; en-suite bathroom. Access to private balcony.

### First floor

- Bedroom 16 - King-size bed; en-suite bathroom. Access to private balcony.

Bedrooms 13 and 14 can be converted to contain a king-size bed upon request.





## Living area

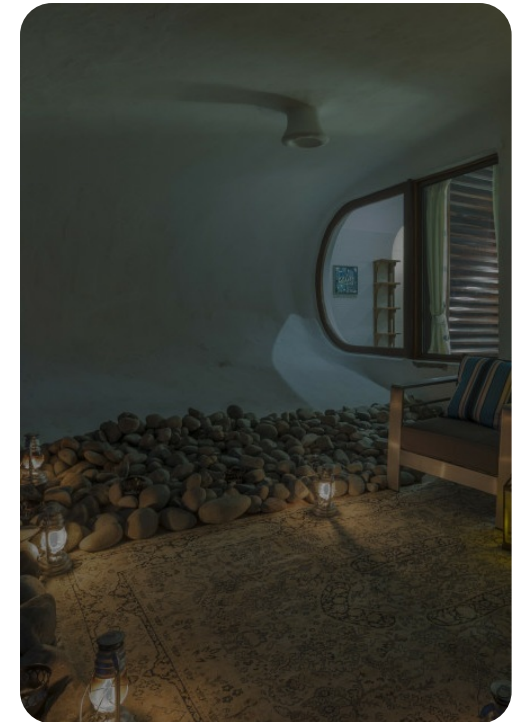
- Open-plan living areas
- Fully equipped kitchens
- Bar areas
- Dining tables and chairs
- Tastefully furnished living rooms with multiple, comfortable seating areas

## Outside area

- 2 private infinity pools
- Private pool
- 2 hot tubs
- Swim-up bar
- Private balconies
- Roof terrace
- Sunloungers
- Pool decks
- Hammock
- Gazebo
- BBQ
- Outdoor tiki kitchen
- Alfresco dining area
- Outdoor lounge area
- Poolside lounge area
- Landscaped gardens

## Home entertainment

- Flat-screen TVs in all bedrooms and two living areas
- Home gym in Main House
- Grand piano in Main House



## General

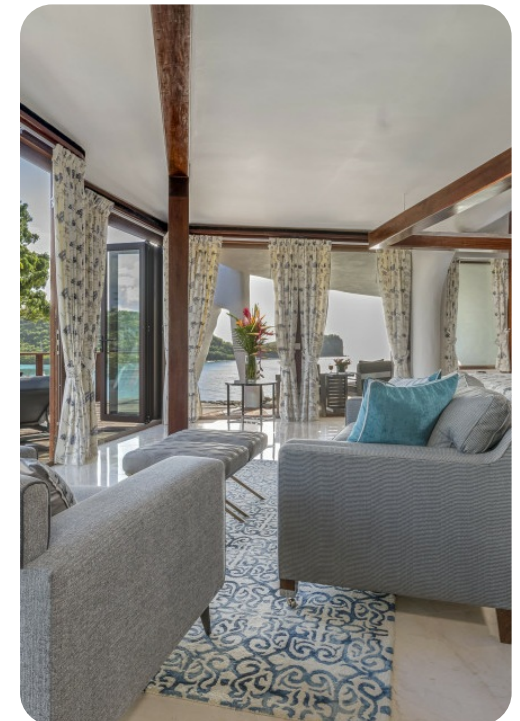
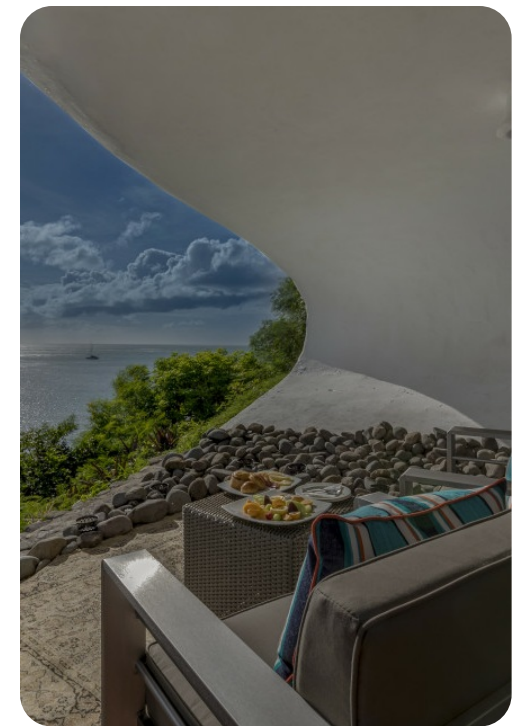
- Air conditioning in bedrooms
- Ceiling fans in bedrooms (except Bay View Villa)
- Complimentary wifi
- Bedding and towels included
- Private parking
- Iron and ironing board
- Mini bar and tea/coffee in each bedroom
- Pet friendly (additional security deposit may apply)
- Must book full estate over holiday periods

## Staff

- Team of chefs: Head chef, sous chef, pastry chef and assistant chef
- Laundress
- 3 maids
- Pool attendant
- Beach attendant
- Head gardener and Gardening Team
- Boat Captain
- Villa Manager
- Concierge
- 24 hour security

## Extras

- Additional guests per night: \$250 per adult guest, \$150 per child and \$100 per baby
- Motor boat (\$1000 per day)
- Speedboat for watersports (\$100 per hour)
- Special events, music groups, steel pan band, and fireworks displays (at additional cost)





## Estate amenities

- Outdoor movie screen
- Private beach
- Large fire pit on beach
- Private dock
- On-site private water filtration, desalination plant and generator
- 3 luxury vehicles with driver (12 seater bus and two 7 seater SUVs)
- Inclusive of all meals and drinks



