

📍 Margaritaville

Margaritaville 123

🛏 3 🍽 3 👥 8



Please Note: A refundable security deposit of up to \$500 is to be collected upon check-in

Key features

- 3 bedrooms
- 3 bathrooms
- Sleeps 8
- Private patio
- Access to resort amenities

Bedrooms

- Bedroom 1 - King-size bed; adjacent bathroom includes single vanity and walk-in shower
- Bedroom 2 - Queen-size bed; adjacent bathroom includes single vanity and walk-in shower
- Bedroom 3 - Queen-size bed; adjacent bathroom includes single vanity and shower/bathtub combination

Living area

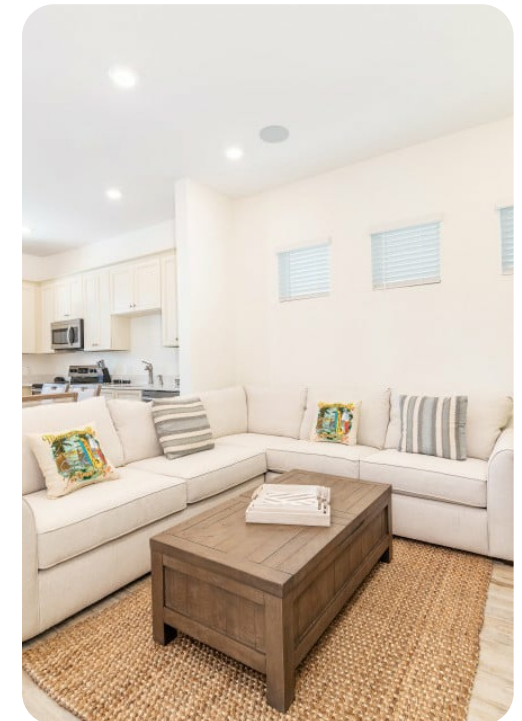
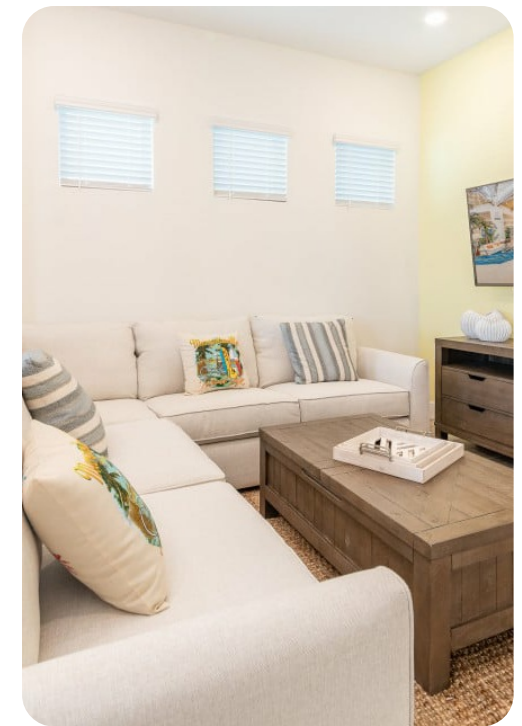
- Open-plan living area
- Fully equipped kitchen
- Dining table and chairs
- Tastefully furnished living room with flat-screen TV and comfortable sofa
- Den area

Outdoor area

- Private patio
- Sunloungers
- Table and chairs

Home entertainment

- Flat-screen TVs in living area and all bedrooms



General

- Air conditioning
 - Internet access
 - Parking
-

Laundry facilities

- Washer and dryer
 - Iron and ironing board
-

Resort facilities

A beautiful resort where luxury living meets fantastic fun, Margaritaville is a brand new holiday destination, home to a spectacular range of amenities. Set within lush, tropical grounds, this resort features an impressive lagoon-style pool, soft sand beaches and an exhilarating waterpark, suitable for the whole family. Guests can also benefit from a relaxing spa, a fitness center and plenty of kids clubs with activities to suit all ages. Furthermore, the entertainment district offers a wide range of first-class shopping, dining and lounge experiences, all within walking distance of your holiday home and there's a complimentary shuttle to the theme parks.

Places of interest

- Disney World - 5.1 miles
- Universal Studios - 16.7 miles
- Sea World - 11.7 miles
- Orlando International Airport - 24.5 miles

Parts of the Margaritaville Hotel are currently under construction. Apologies for any disturbance or inconvenience this may cause during your stay at Margaritaville Resort, Orlando.





