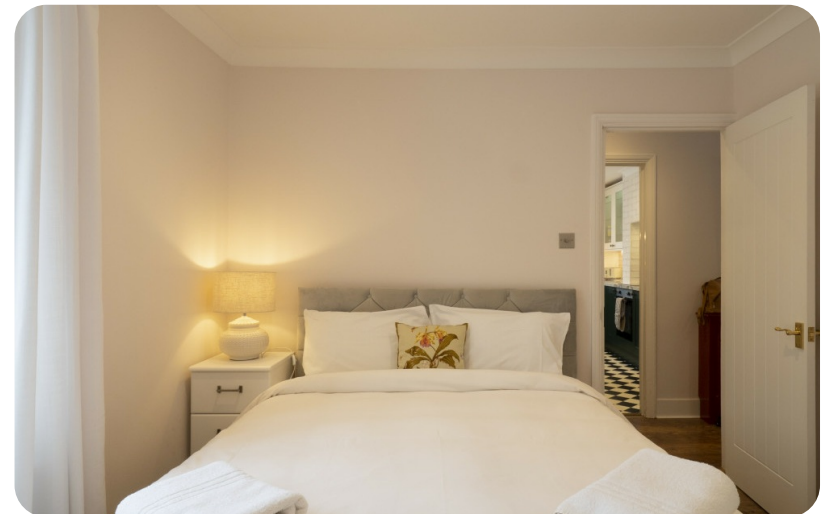


📍 Lyminge

Lyminge 3

🛏 2 🚿 1 👥 3



Key features

- 2 bedrooms
- 1 bathroom
- Sleeps 3
- Backyard

Bedrooms

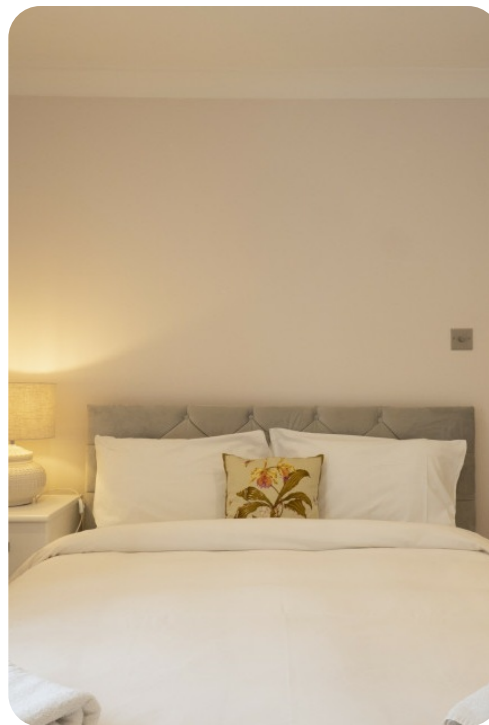
- Bedroom 1 - Double bed
- Bedroom 2 - Single bed

Living areas

- Fully equipped kitchen
- Dining table and chairs
- Tastefully furnished living room with flat-screen TV and comfortable sofas

General

- Private parking
- Wireless internet
- Heating
- Washing machine
- Hair dryer
- Iron



Location

- The property has its own private garden, directly opposite there is 500 acres of beautiful woodland walks, and also shares two acres of wildflower meadows with picnic areas with the nearby cottages.
- The village is surrounded by farmland and ancient forests. There is a wide variety of flora and fauna in the surrounding area, including badgers, various species of deer along with wild boar which are thought to have escaped from farmed populations.
- Lyminge was a royal centre of the Kingdom of Kent of Anglo-Saxon England and a church was founded in 633.

Getting Around

- A car is a necessity for your stay or a taxi service will be required as there are no public transport routes within walking distance.

Guest Access

- You will have access to the entire home, and your own private garden, and welcome to explore the shared surrounding acres of wildflower meadows with picnic spots and woodland walks.
- You are welcome to bring your dog to enjoy the surrounding walks. If you would like to bring more than one dog, please get in touch to request this prior to your arrival. You will also be required to pay an additional pet fee.



