

📍 Joshua Tree

Joshua Tree 16

🏠 4 📄 2 👤 10



Key Features

- 4 bedrooms
- 2 bathrooms
- Sleeps 10
- Fire-pit

Bedrooms

- Bedroom 1 - King-size bed
- Bedroom 2 - King-size bed
- Bedroom 3 - Queen-size bed
- Bedroom 4 - Bunk bed (double/twin)

Living area

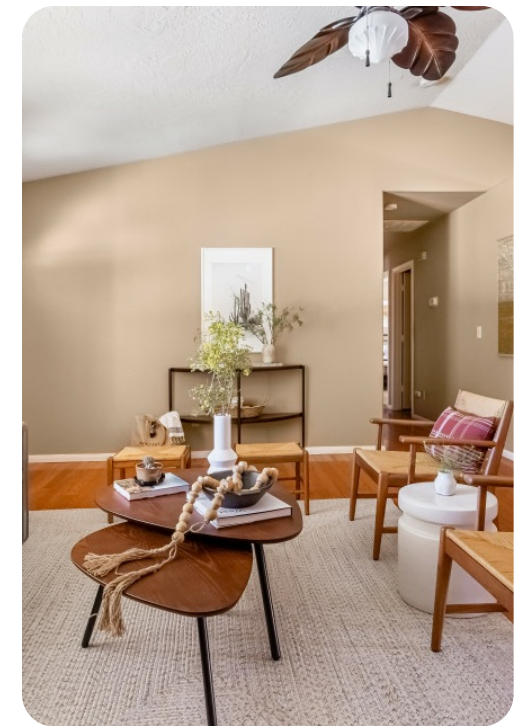
- Open-plan living area
- Fully equipped kitchen
- Breakfast bar with seating
- Dining table and chairs
- Tastefully furnished living room with flat-screen TV and comfortable sofas

Outdoor area

- Fire-pit with seating area
- Hammock
- Table tennis
- Covered lanai with alfresco dining area

Home entertainment

- Flat-screen TVs in living area and all bedrooms



General

- Air conditioning throughout
- Complimentary wifi
- Bedding and towels included
- Private parking

Good to know

- Please note that we do not provide firewood.
- Please be aware that wildlife such as insects, scorpions, and snakes may be present. Our team does their best to check the home before your arrival, but be mindful about leaving the doors & windows open during your stay.
- You must be 25 years or older to book this property.
- Please note our occupancy includes an additional two beyond bed count. Trifold floor mattresses and additional linens can be provided upon request.



