

📍 Joshua Tree

# Joshua Tree 1

🛏️ 6 🪑 4 👥 14





## Key Features

- 6 bedrooms
- 4 bathrooms
- Sleeps 14
- Private pool
- Hot tub

## Bedrooms

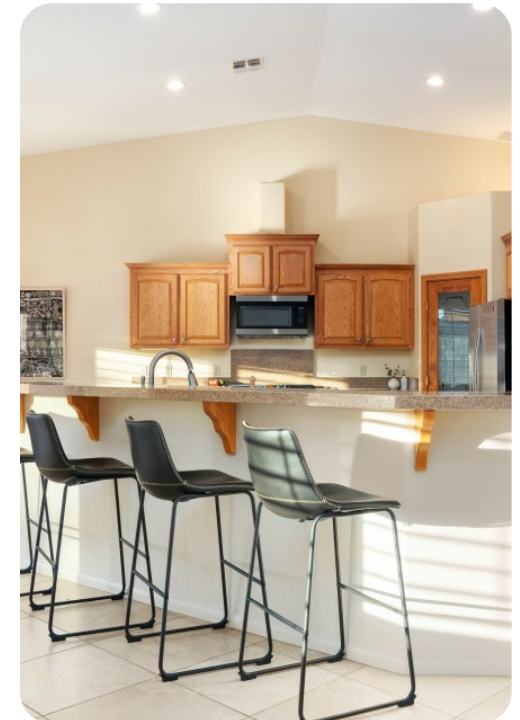
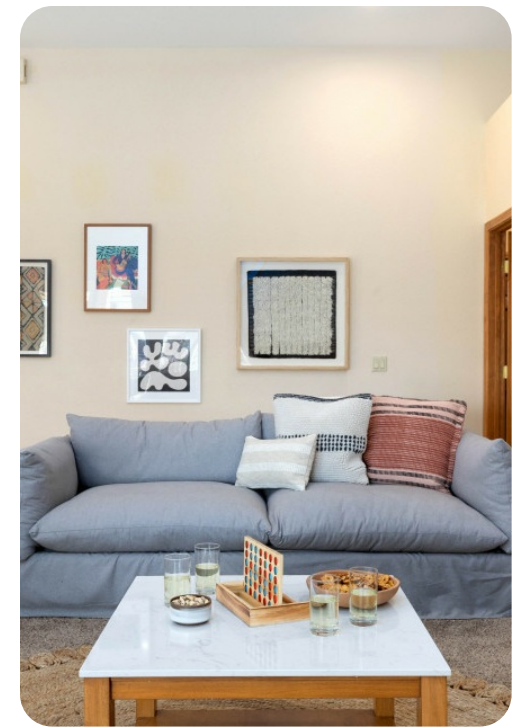
- Bedroom 1 - King-size bed
- Bedroom 2 - Queen-size bed
- Bedroom 3 - Queen-size bed
- Bedroom 4 - Queen-size bed
- Bedroom 5 - Queen-size bed
- Bedroom 6 - King-size bed

## Living area

- Open-plan living area
- Fully equipped kitchen
- Breakfast bar with seating
- Dining table and chairs
- Tastefully furnished living room with flat-screen TV and comfortable sofas
- Fireplace
- Additional living area with seating and foosball

## Pool area

- Private pool
- Hot tub (pool heat required)
- Sunloungers
- Fire-pit with seating area
- Swing chair
- Covered lanai with alfresco dining area
- Outdoor bar with table and chairs



## Home entertainment

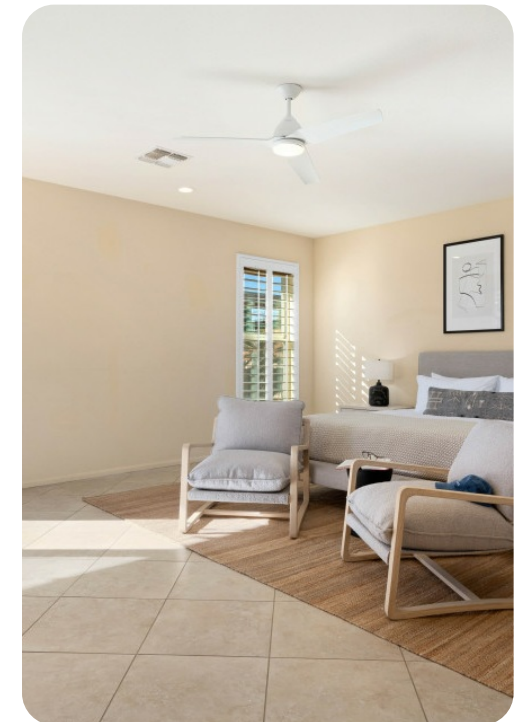
- Flat-screen TVs in living area and all bedrooms

## General

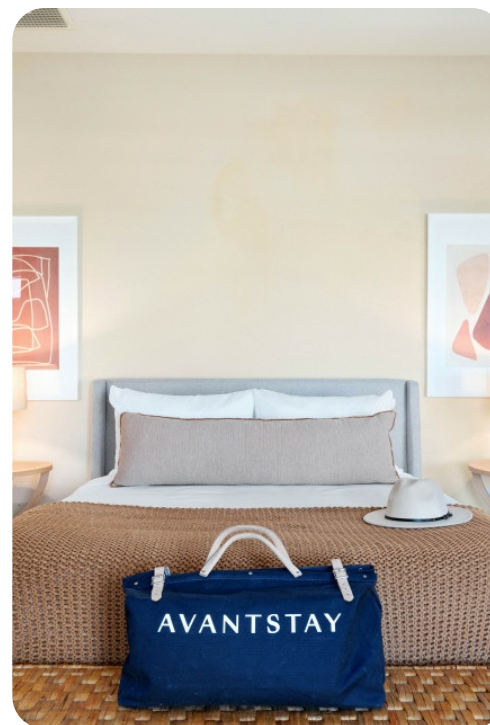
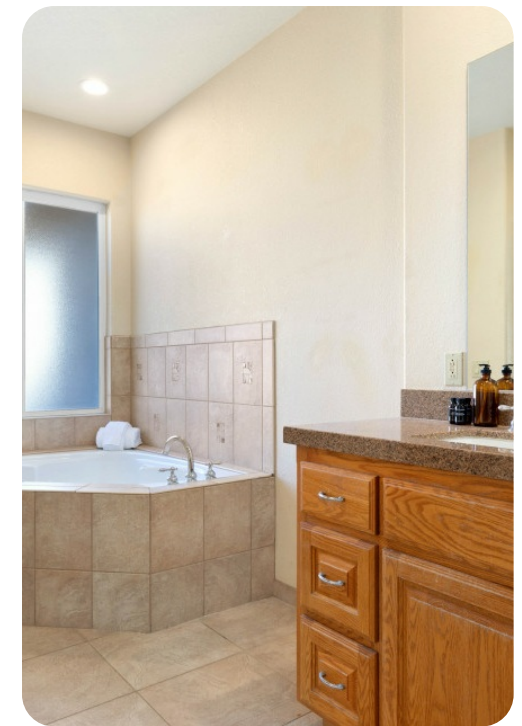
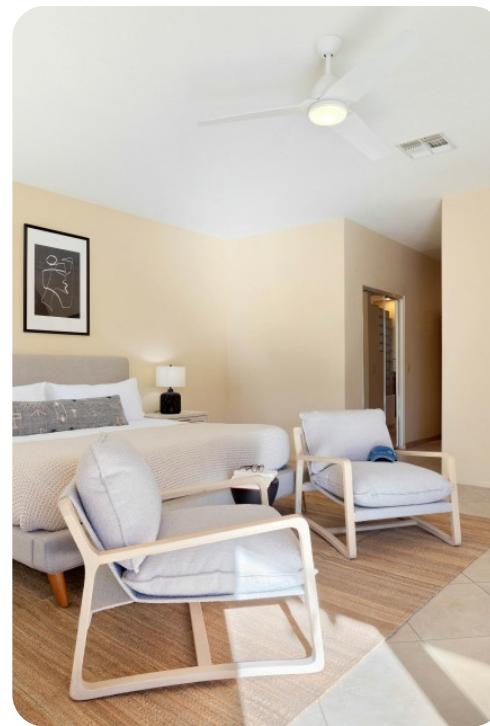
- Air conditioning throughout
- Complimentary wifi
- Bedding and towels included
- Private parking

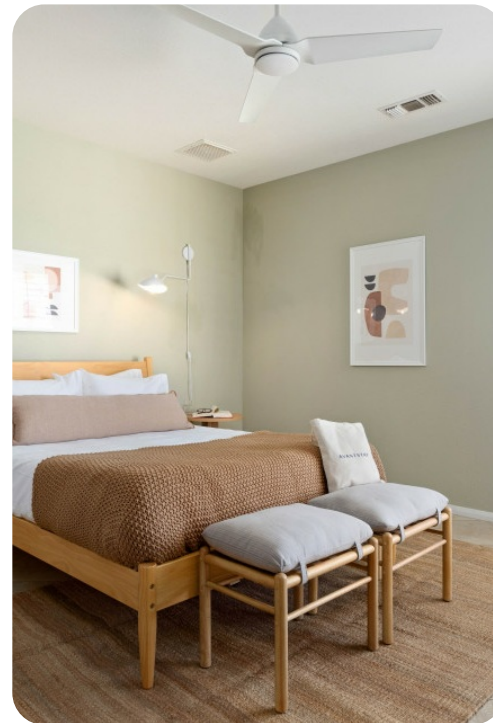
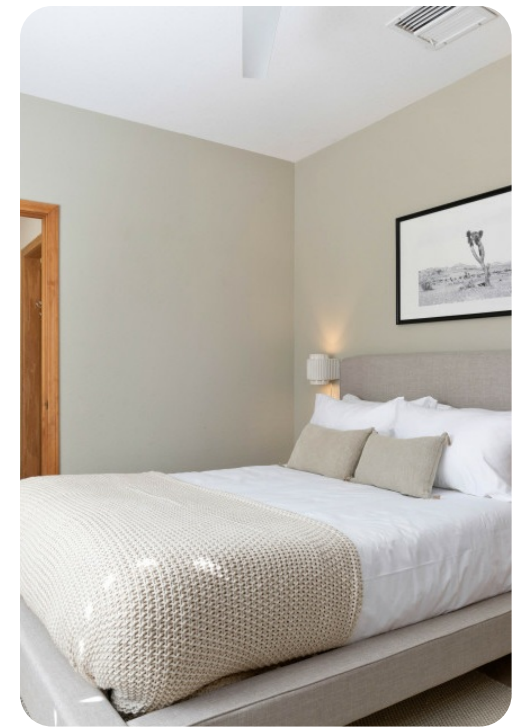
## Good to know

- Please note that pool heat is not available between May and September.
- Pool heat is available for an additional fee but needs to be requested before your stay.
- You must be 25 years or older to book this property.
- Please note our occupancy includes an additional two beyond bed count. Trifold floor mattresses and additional linens can be provided upon request.



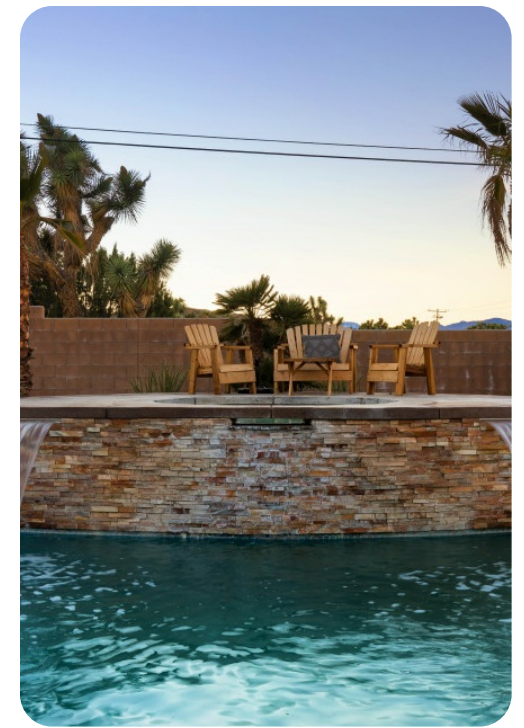




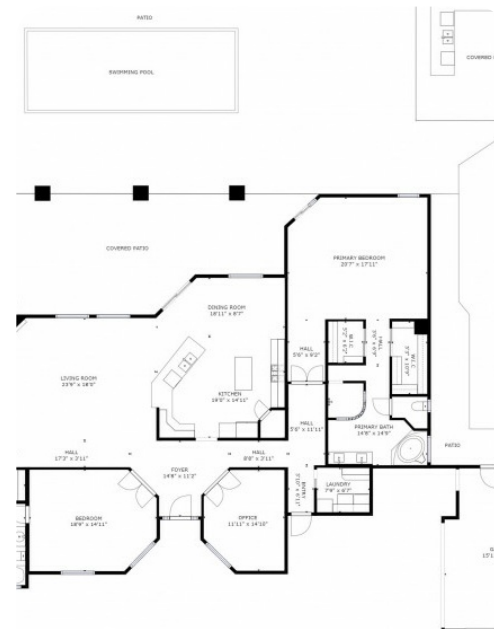
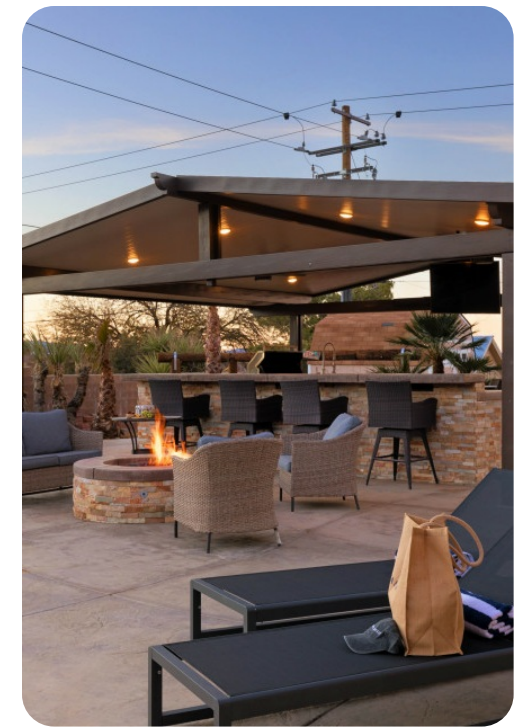












GROSS INTERNAL AREA  
FLOOR 1: 3654 sq. ft. EXCLUDED AREAS:  
GARAGE: 360 sq. ft.