

📍 Gatlinburg

# Gatlinburg 33

🛏 4 🪑 3 👥 10





## Key Features

- 4 bedrooms
- 3 bathrooms
- Sleeps 10
- Hot tub

## Bedrooms

- Bedroom 1 - King-size bed
- Bedroom 2 - Queen-size bed
- Bedroom 3 - King-size bed
- Bedroom 4 - Bunk bed (Double over Double)

## Living Area

- Open-plan living area
- Tastefully furnished living room with comfortable sofa, fireplace and TV
- Fully equipped kitchen
- Breakfast bar with seating
- Dining table and chairs

## Home Entertainment

- Game room with pool table and TV

## Outdoor Area

- Hot tub
- Lounge area
- BBQ
- Alfresco dining





## General

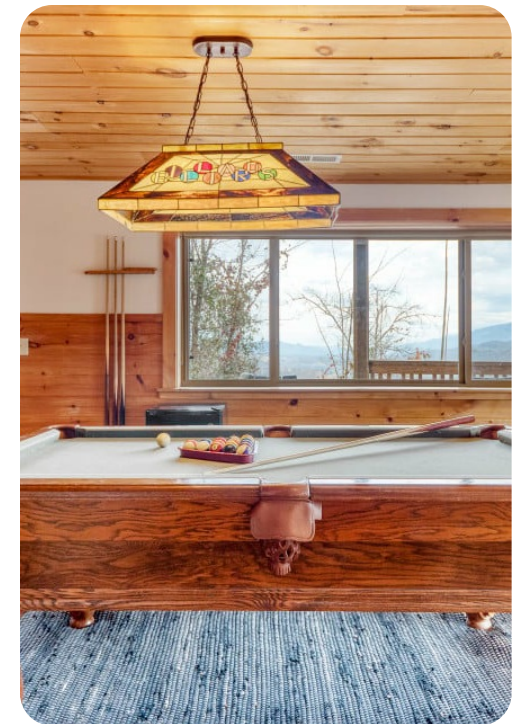
- Air conditioning
- Private parking
- Bedding and towels provided
- Complimentary wifi

## Good to know

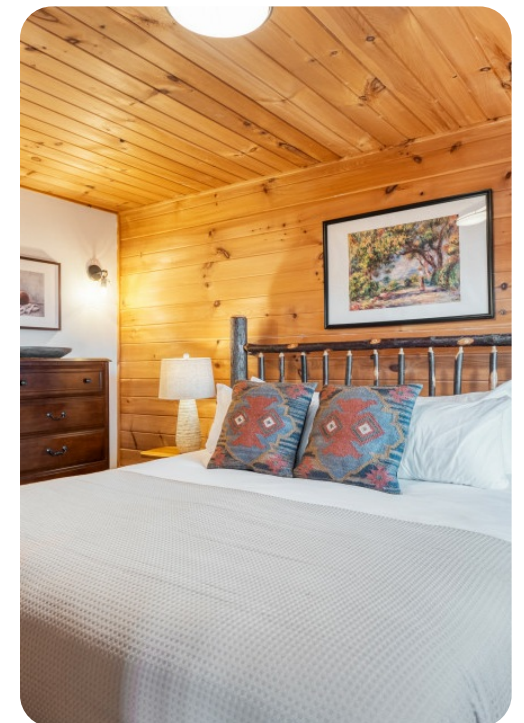
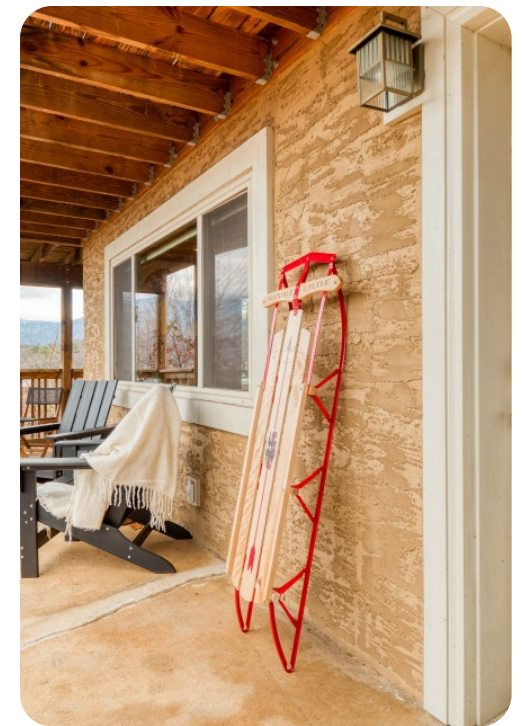
- Pets must be approved in advance and are subject to an additional fee of \$150 per pet and a deposit of \$300. If undisclosed pets are brought into the home without approval there is a fine of \$500 per pet.
- Firewood is available for an additional fee.
- This home comes with a pack n' play travel crib available. A high chair can be provided upon request with at least 24hrs advanced notice. Just ask and we are happy to accommodate you and your little ones!
- This is a smoke-free property. Violation of the no-smoking policy will result in forfeiture of the security deposit, a \$300 smoking fee, and liability for any fire or property damage costs.
- As part of our commitment to being good neighbors, occupancy limits and quiet hours (9pm-8am) are strictly enforced. No speakers or sound systems will be provided for use in our properties. Violation of any noise ordinances will be subject to fines that can reach up to \$10,000 per violation.
- Events or parties are not allowed without prior written approval and an additional fee. Any unauthorized parties or events will be shut down and a fine will be assessed. Please inquire for more information about our event policies and fees.
- You must be 25 years or over to book this property. IDs will be requested for verification after booking. All bookings over 30 days require a security deposit.

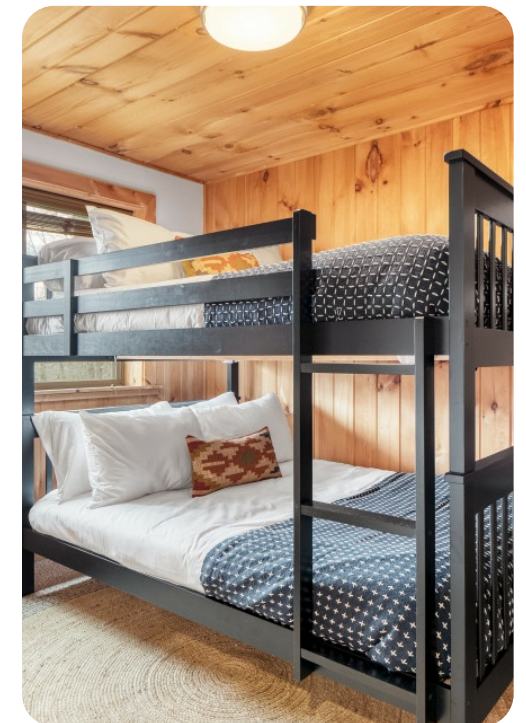




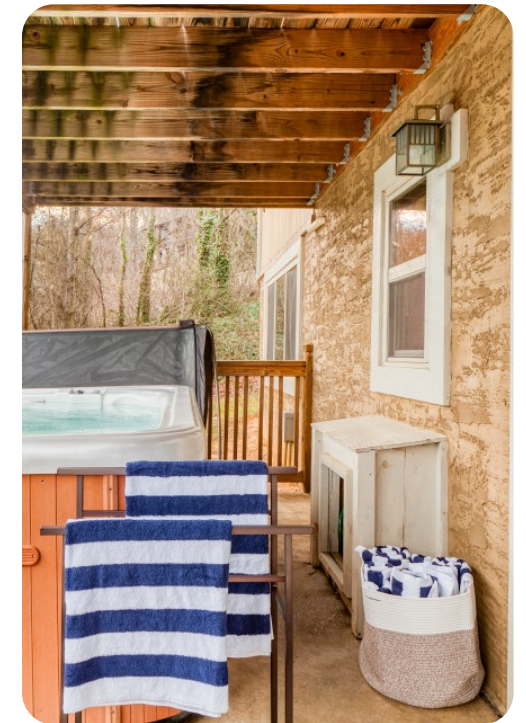


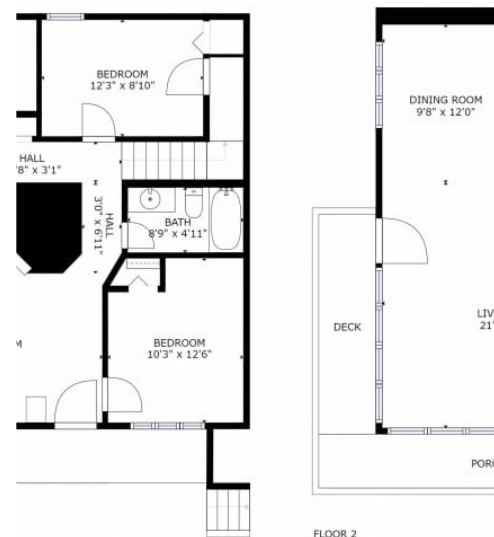












GROSS INTERNAL AREA  
FLOOR 1: 931 sq. ft., FLOOR 2: 1025 sq. ft.