

📍 Flagstaff

Flagstaff 2

🛏 5 🍳 5 👥 14 🏠 4000 sq.ft



Key Features

- 5 bedrooms
- 5 bathrooms
- Sleeps 12
- Landscaped garden

Bedrooms

- Bedroom 1 - King-size bed; access to terrace
- Bedroom 2 - King-size bed
- Bedroom 3 - King-size bed
- Bedroom 4 - 2 queen-size beds
- Bedroom 5 - Bunk bed (Twin/Twin)

Living area

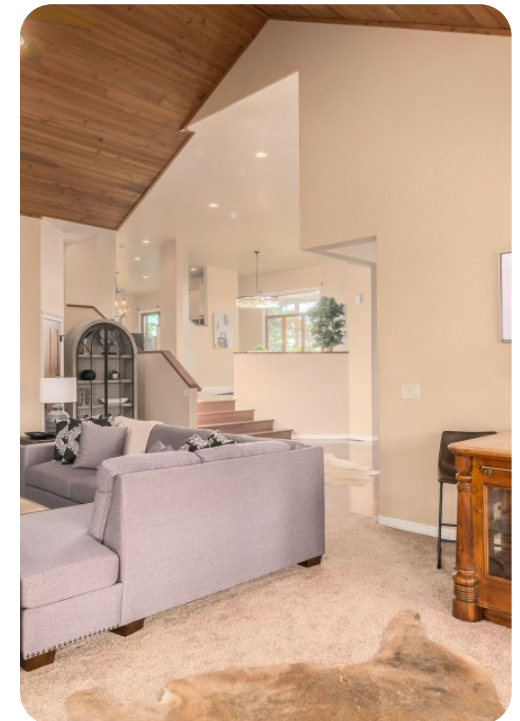
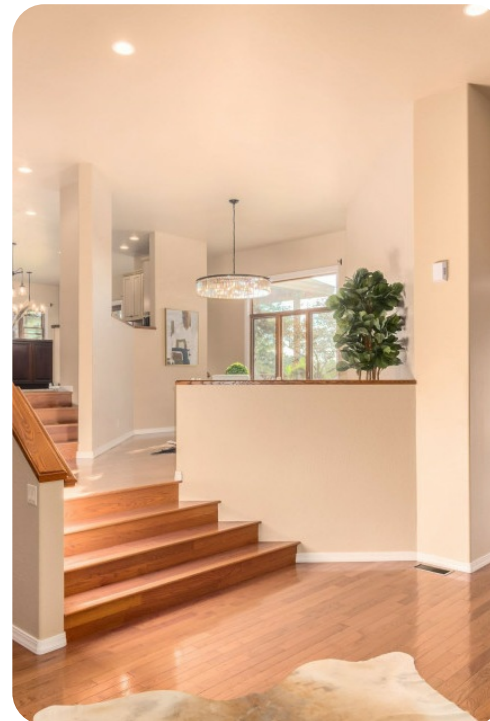
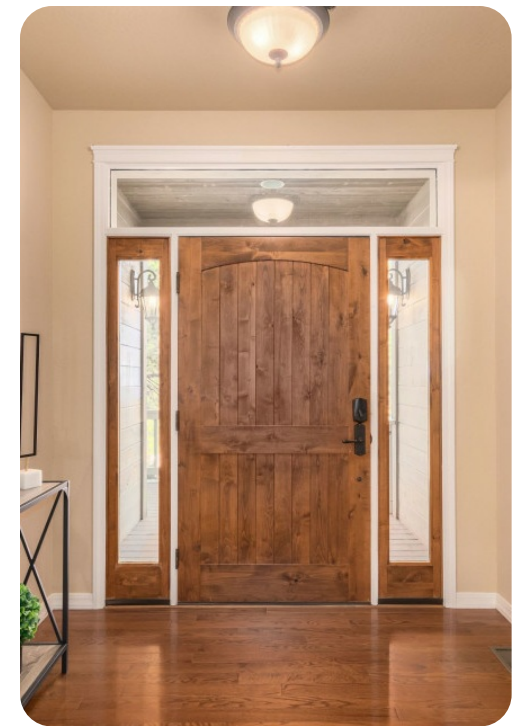
- Tastefully furnished living room with comfortable sofa, gas fireplace, smart TV and deck access
- Dining room with built-in bar/wine area
- Fully equipped kitchen
- Breakfast bar with seating

Outdoor area

- Lower deck with plenty of seating areas
- Hot tub deck
- Upper patio with built in gas BBQ & fireplace and outdoor dining
- Two terraced lawns

General

- Private parking
- Bedding and towels provided
- Complimentary wifi
- Washer & dryer



Good to know

- Guest Access: 24/7 Guest access via Smartlock technology.
- The Neighborhood: The Amberwood neighborhood is less than 10 minutes from Downtown Flagstaff in the heart of the Wilderness. Pure forest serenity!
- Although this property is perfect for entertaining, for liability purposes, only registered guests are allowed after quiet hours. We have a ZERO TOLERANCE Party & Event Policy. The City of Flagstaff takes noise disturbances very seriously and can result in fines & the removal of this listing from the various platforms.
- A Ring Doorbell Camera is installed to monitor REAL Occupancy and for emergency situations only. There is also a camera placed in a location that only monitors the side yard & front driveway/garage.
- Properties may include a NoiseAware noise alert monitoring system in order to ensure that neighborhood noise levels are respected. It does NOT record actual sounds or conversations, it simply monitors the noise level (measured in decibels).

