

📍 Christ Church

Emily House

🛏 7 📏 5.5 👥 14



Key features

- 7 bedrooms
- 5.5 bathrooms
- Sleeps 14
- Private pool
- Game room
- Housekeeper and laundress
- Direct beach access
- Beachfront

Bedrooms

Ground floor apartment

- Bedroom 1 - 3 twin beds; adjacent bathroom includes single vanity and walk-in shower
- Bedroom 2 - King-size bed; Jack and Jill-style bathroom includes single vanity and walk-in shower
- Bedroom 3 - 2 twin beds; Jack and Jill-style bathroom includes single vanity and walk-in shower

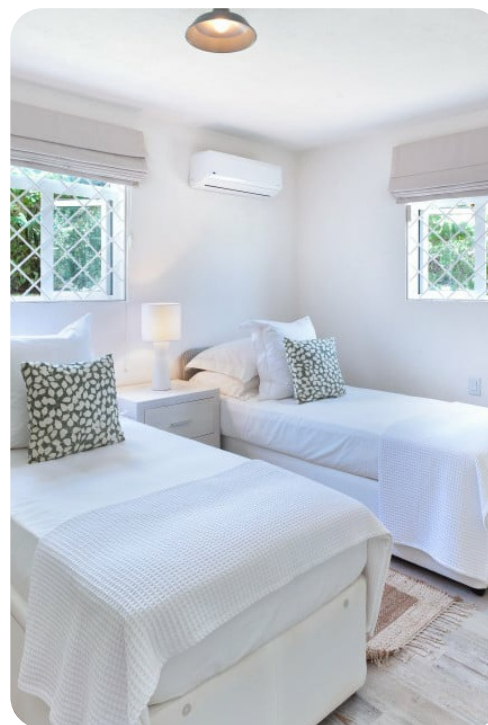
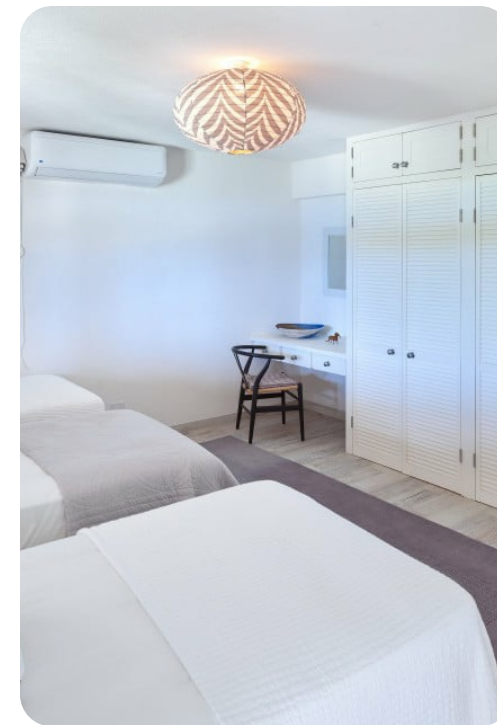
Entry floor

- Bedroom 4 - King-size bed and in-room bathtub; en-suite bathroom includes single vanity and walk-in shower. Access to pool terrace.

Second floor

- Bedroom 5 - King-size bed; Jack and Jill-style bathroom includes double vanity and walk-in shower
- Bedroom 6 - 2 twin beds; Jack and Jill-style bathroom includes double vanity and walk-in shower
- Bedroom 7 - King-size bed; en-suite bathroom includes double vanity and walk-in shower

The ground floor apartment can be accessed via a stairway from the entry floor, or there is also a separate entrance available.



Living area

- Open-plan living area
- Fully equipped kitchen
- Kitchenette
- Breakfast bar with seating
- Dining table and chairs
- Tastefully furnished living room with flat-screen TV and comfortable sofas
- Additional living room with sofas

Outside area

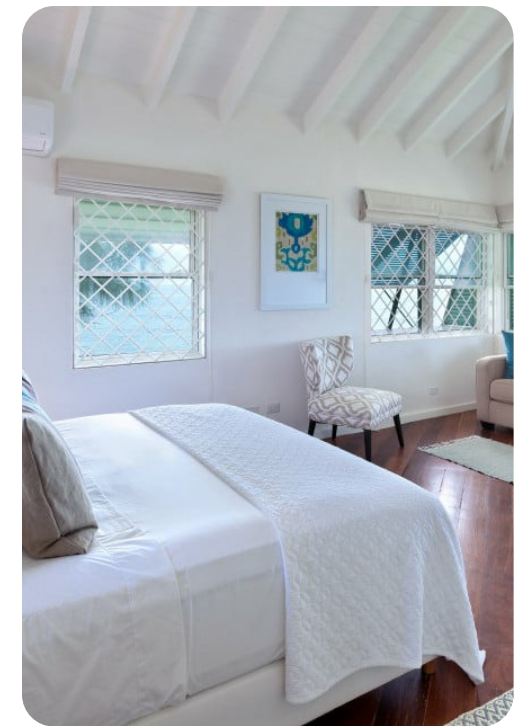
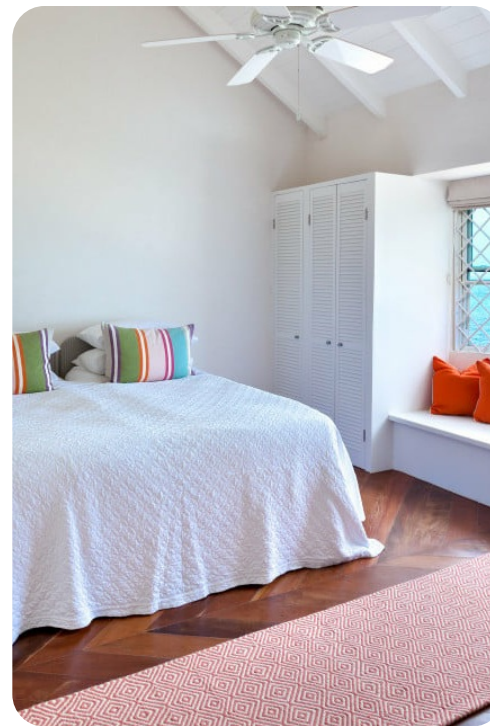
- Private infinity pool
- Veranda
- Sunloungers
- Pool deck
- Covered terrace
- Alfresco dining area
- Outdoor lounge area
- Poolside lounge area

Home entertainment

- Flat-screen TV in living area
- Game room with foosball and pool table

General

- Air conditioning in bedrooms
- Ceiling fans throughout
- Complimentary wifi
- Bedding and towels included
- Private parking
- Iron and ironing board
- Security system
- Safe



Staff

- Housekeeping (5 days per week)

