

# Canggu 4658 - Villa Hana

Region: Canggu Bedrooms: 4 Sleeps: 8 Bathrooms: 4

Secure in its own walled garden, the strikingly contemporary fully staffed Villa Hana offers four bedroom suites, including a double bunk room for kids, media room with 52-inch TV and Playstation 2, and split-level living pavilion overlooking the pool - ideal for families with kids. Surfing friends will appreciate the breezy laid-back vibe and 300-metre stroll to the surf breaks of Echo Beach. A car and driver are available at a special rate; though with the extensive in-house menu and both formal dining room and large barbecue deck, there's no need to leave the villa.

## Features and amenities

### Location

Echo Beach Canggu, Bali, Indonesia.

### Capacity

Up to 6 adults and 4 children (4 ensuite bedrooms: 3 with king-size beds, one with 4 bunk beds). The TV room may be converted as a bedroom and can sleep up to extra 4 adults. Extra beds are available on guest request. A total of 5 extra guests may be accommodated in the villa at additional charge.

### Living areas

Living pavilion; indoor dining for 10; media room; barbecue dining area.

### Pool

15m x 3.6m.

### Staff

Villa manager; guest services assistant; butlers; chef; gardener; driver; security.

### Dining

Western, Asian and barbecue menus plus suggested set menus.

### Communication

WiFi internet access; room-to-room phones.

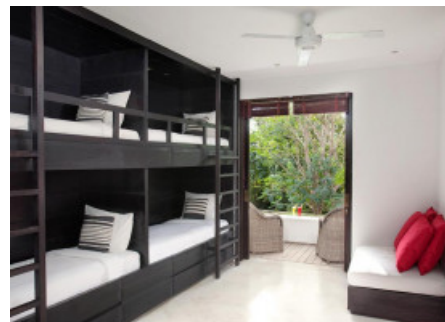
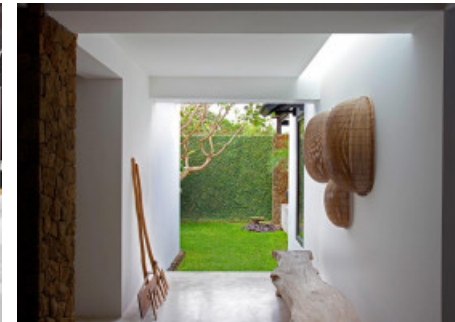
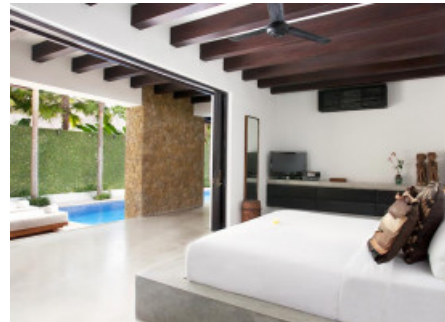
### Entertainment

Satellite TVs, DVD players; iPod docks; home theatre system; DVD and CD library; Playstation 2.

### For families

Villa Hana is very well equipped for families. Facilities include a bunk bedroom; books, board games and DVDs; high chairs; baby cots; booster seats.

### Spa



In-villa treatments selected from a comprehensive spa menu can be carried out by professional beauty therapists (extra cost applies).

### Transport

A seven-seater car and driver is available for USD35++ for up to 8 hours a day, excluding petrol.

### Additional facilities

Barbecue; in-room safes; back-up generator.

### Property area

1,350sqm (land); 700sqm (villa).

### The layout

#### Indoor living

- Huge split-level vaulted living and dining pavilion overlooking the pool
- Open-plan fan-cooled living, with over-sized sofas and ottomans
- Dining for 10, and modern well-equipped kitchen
- Air-conditioned home theatre with 52-inch TV, DVD and PS2
- Shaded covered walkways linking the three individual pavilions

#### Outdoor living

- 15m swimming pool
- Sun-deck with six loungers
- BBQ courtyard with table for 10
- Pergola with seating facing courtyard garden

### The rooms

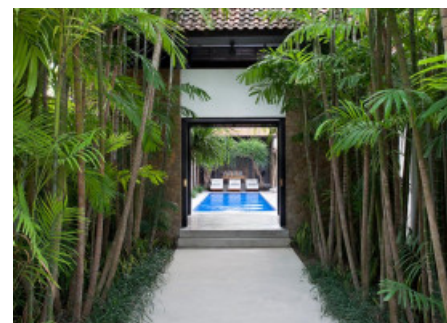
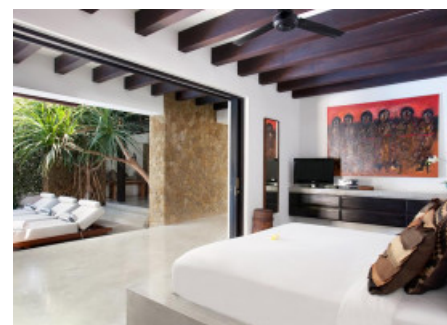
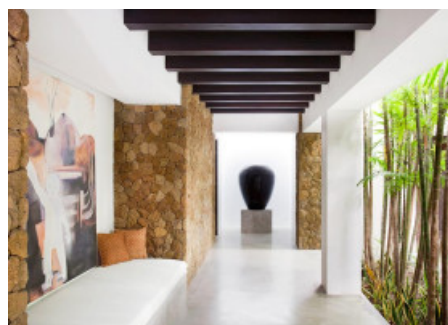
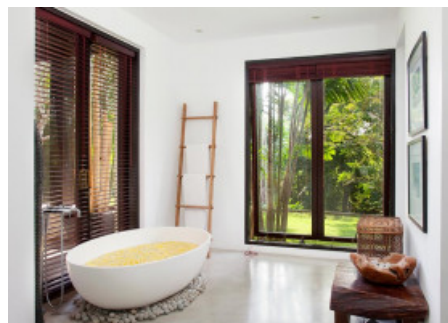
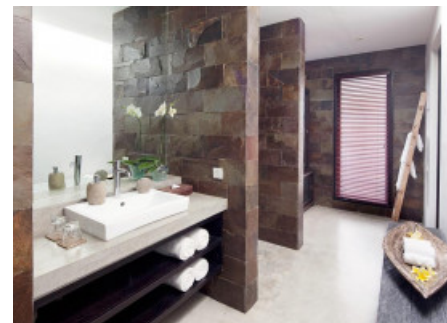
#### Master suite

- King-size bed
- Glass sliding doors opening onto private riverside terrace
- Huge bathroom with twin basins, rainshower and bathtub set before sliding glass doors onto terrace
- 32-inch TV, DVD and iPod dock
- Air-conditioned

#### Guest rooms

- King-size beds
- Bathrooms with double vanity and rainshower
- 32-inch TV, DVD and iPod dock

#### Children's Room



- Four bunk beds with twin ladders
- Comfy floor cushions for flopping on
- 32-inch TV, DVD and iPod dock
- Private riverside terrace
- Can be converted to a family room with extra queen-size bed

### Location

Located in Canggu on Bali's south-western coast, Villa Hana is a short walk from Echo Beach - noted for its powerful surf breaks and panoramic coastline views. Farmers tend their crops and cows graze in the adjoining fields, which are dotted with a few other luxury villas leading to the ocean. A growing number of beachfront restaurants, bars and boutiques fuels a lively social scene within this rural idyll and surfers' haven. The antique-filled Hotel Tugu and yoga-scene Desa Seni are a few kilometres away, and those seeking brighter lights and late nights can be in Seminyak in well under 30 minutes.

### Places of interest

- Echo Beach 0.55 km
- Finns Recreation Club 4.00 km
- Seminyak 8.00 km
- Kuta 15.00 km
- Waterbom Park 16.00 km
- Denpasar Airport 17.00 km
- Ubud 32.00 km
- Mt Batukaru 35.00 km
- Elephant Safari Park 47.00 km

