

📍 Arezzo

# Ca Maggiore

🛏 6 🍽 5 👥 12





## Key Features

- 6 bedrooms
- 5 bathrooms
- Sleeps 12
- Private pool
- Landscaped garden

## Bedroom

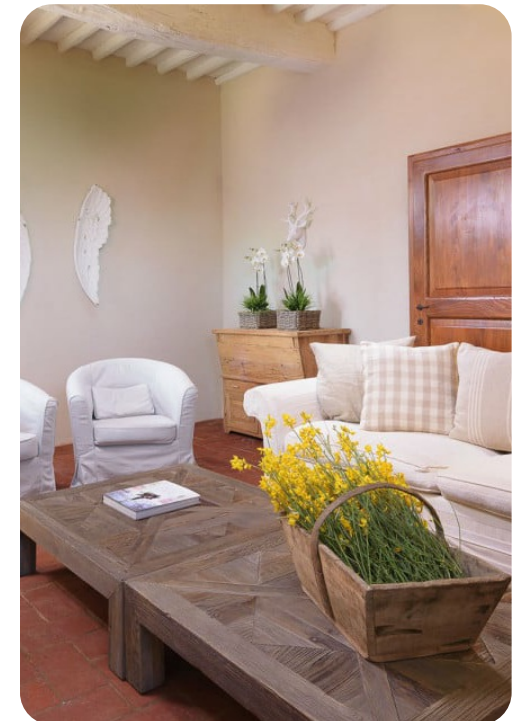
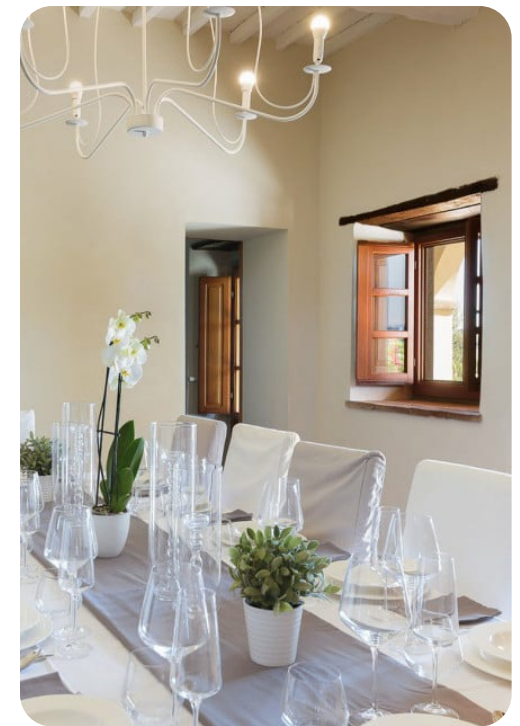
- First Floor: Bedroom 1 - 2 queen-size beds, en-suite bathroom with shower
- First Floor: Bedroom 2 - Double bed, en-suite bathroom with shower
- First Floor: Bedroom 3 - Double bed, en-suite bathroom with shower
- First Floor: Bedroom 4 - Double bed, shared bathroom with shower
- Turret: Bedroom 5 - Double bed, shared bathroom with shower
- Annex: Bedroom 6 - Double bed, bathroom with shower

## Living area

- Ground Floor: Sitting room, TV room, Dining room and equipped kitchen
- First Floor: Living room with comfortable sofa, piano and fireplace
- Annex: Living space

## Outdoor area

- Private pool
- Sun beds
- Outdoor living and dining area
- BBQ
- Wood oven



## General

- Air conditioning
- Private parking
- Bedding and towels provided
- WiFi
- Baby cot & highchair
- Washer dryer machine
- Iron and ironing board
- Hairdryer

## Good to know

- Pets: Yes. 30,00 Euros per animal per week to be paid on site
- The pool is open from the last Saturday of April to the first Saturday of October

## Price includes

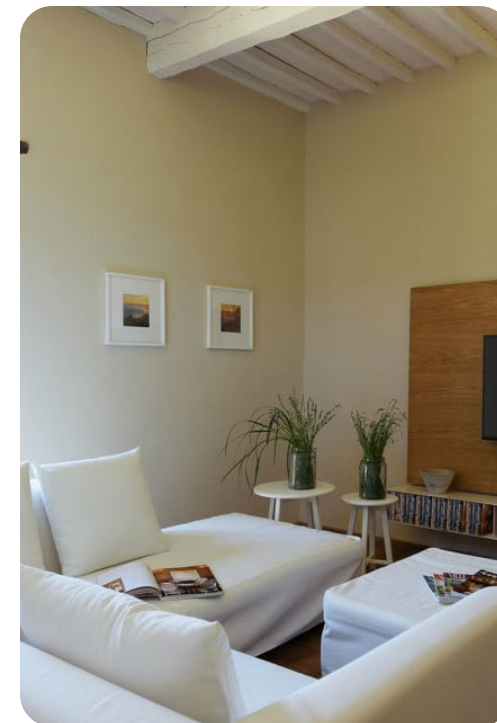
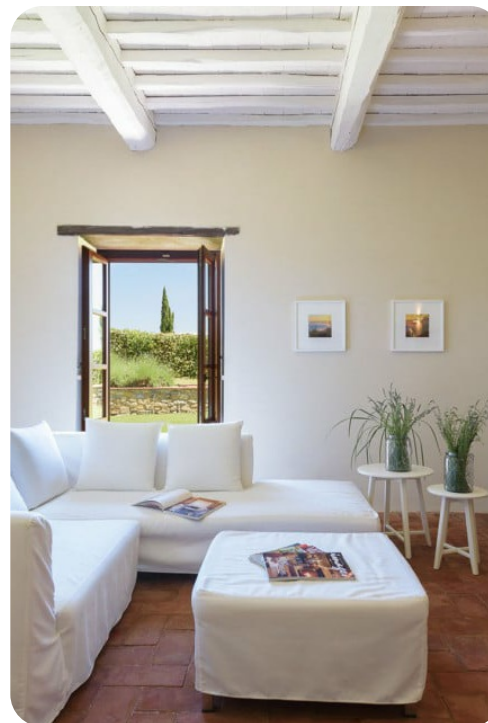
- Weekly linen
- Initial and final cleaning
- Utilities: electricity, water - gas for kitchen use

## Price does not include

- Mandatory extra cleaning in case of animals (30,00 Euros/week/animal)
- Tourist Tax(where applicable)

## Extras on request

- Extra cleaning (22,00 Euros/hour per cleaner)
- Extra linen (20,00 Euros per person)
- Heating (on consumption up to date market prices)
- Extra cleaning in case of animals (30,00 Euros/week/animal)
- Wood (20,00 Euros/100KG)





## Places of Interest

- Airport: Firenze 84 km, Pisa 145 km, Bologna 166 km, Roma Fiumicino 256 km, Milano Malpensa 416 km
- Train station: Arezzo 15 km
- Shops and services: Castiglion Fibocchi 800 m
- Beaches: Tyrrhenian Sea 180 km, Adriatic Sea 150 km
- Attractions within 100 km: Arezzo 14 km, Siena 60 km, Firenze 67 km, Anghiari 33 km, Sansepolcro 41 km, Gaiole in Chianti 42 km, Cortona 42 km, Radda in Chianti 44 km, Montepulciano 63 km, Pienza 70 km, Lago Trasimeno 75 km

