

📍 Bukit

Bukit 5727 - Villa Markisa

🛏 5 🚿 5 👥 10



Villa Markisa is one of four luxury villas on the Pandawa Cliff Estate, set high above the ocean on Balis scenic Bukit peninsula - a wedding and event venue par excellence. The villa has been intelligently designed to give friends and family groups a fantastic level of privacy and flexibility. Its accommodation is arranged as a superlative cliff-edge master suite - the estates Bridal Suite, a pair of two-level two-bedroom interconnecting apartments, a communal living pavilion, three pools and a breezy cliff-edge bale. Guests enjoy the estates sports centre with gym, spa, tennis and squash courts, plus polished service from a huge staff team.

One of just four villas in the exclusive Pandawa Cliff Estate, Villa Markisa is set on the cliff 100 metres above Pandawa Beach on Balis southernmost tip. Cloud-free azure skies, sheer cliffs dropping to white-sand beaches, and the vast expanse of the Indian Ocean create panoramic views. An Ironwood staircase leads to the raised garden of Pandawa Estates Villa Rose to the east, and the rooftops of the neighbouring villa peek over a high wall to the west. Pandawa Beach is a short drive away - there, you can swim, snorkel, hire a kayak or sip an ice cold Bintang at one of the simple local warungs. This is possibly the remotest part of southern Bali - and yet Uluwatus revered cliff-top temple, the islands famed surf breaks, the Bali National Golf Club, the famed fish restaurants of Jimbaran Bay, and even the airport, are all a short half-hour drive away.

Features and amenities

Location

Kutuh village, The Bukit Peninsula, South Kuta, Bali, Indonesia.

Capacity

10 adults (1 king and 4 split-king beds) plus 2 extra beds on request (additional charge applies).

Living areas

2 air-conditioned interconnecting living rooms; 2 air-conditioned interconnecting dining rooms with tables for 4; air-conditioned living/dining room in master suite; living pavilion with dining for 8; cliff-edge pavilion; lawn-edge deck with seating; 3 poolside decks with sun loungers and tables for 4.

Pool

3 pools: 9m x 4m x 1.2m; 9m x 4m x 1.2m; 6m x 5m x 1m.

Staff

Villa manager; assistant manager; full-time chef; 24-hour housekeeping, butler service and security; garden and pool staff; maintenance engineer; in-house spa therapists. Babysitters available on request.

Dining

Western, Asian, vegetarian and children's dishes. Requests accommodated (including special diets).

Communication



WiFi internet access; landline for international and local calls; mobile phone coverage.

Entertainment

Satellite TVs - 50-inch in master, 43-inch in apartments; DVD players; iPod dock.

Spa and sports centre

Full size tennis court; squash court; spa and gym.

For families

Villa Markisa is well equipped for families, and can provide baby cots, highchairs and booster seats on request.

Transport

A 7-seater car with driver is available on a complimentary basis for up to 8 hours a day. Additional hours are charged on guest account.

Weddings and events

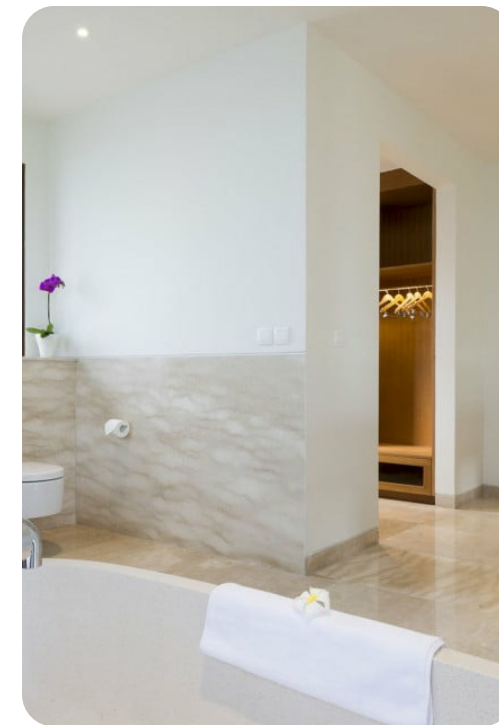
Offering an unbeatable cliff-top setting, with a large lawn and exceptional purpose-built guest facilities, weddings and events for up to 100 people can be held at Villa Markisa - and up to 400 arranged at the estate, with prior notice.

Additional facilities

Barbecue; diesel powered back-up generator; safety deposit boxes.

Property area

3,000 sqm.



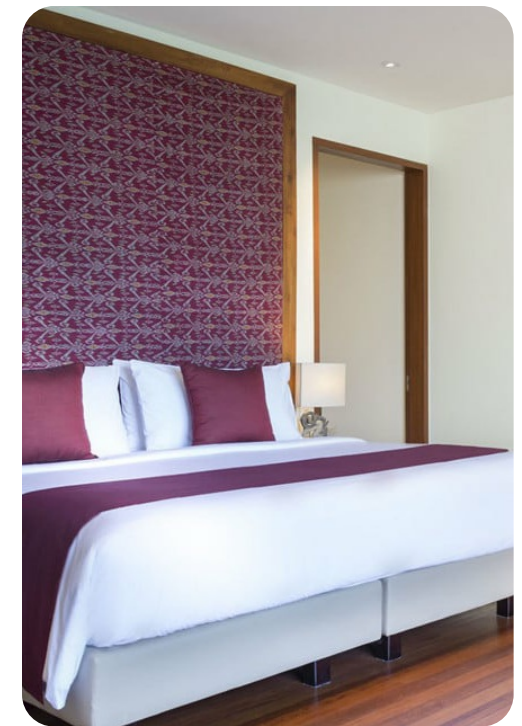
The layout

Indoor living

- Large central open-sided living pavilion with dining table for 8, seating area and 4 guest washrooms
- Two air-conditioned, interconnecting living rooms in the guest pavilion, opening onto a glass-fronted balcony
- Two air-conditioned interconnecting dining rooms opening onto the pool deck, each with open-plan kitchenette and guest washroom
- Air-conditioned living room in the master suite with seating and table for 4, guest washroom and butler's pantry

Outdoor living

- Cliff-edge pavilion with stunning views and table for 8
- Three swimming pools - 9m x 4m; 9m x 4m; 6m x 5m
- Four sun decks - three poolside, with tables for 4 and sun loungers
- Large lawn leading to an ocean-view sun deck



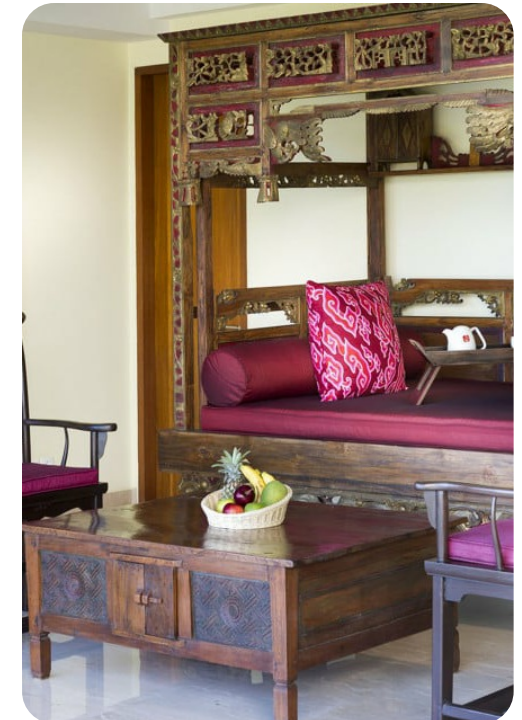
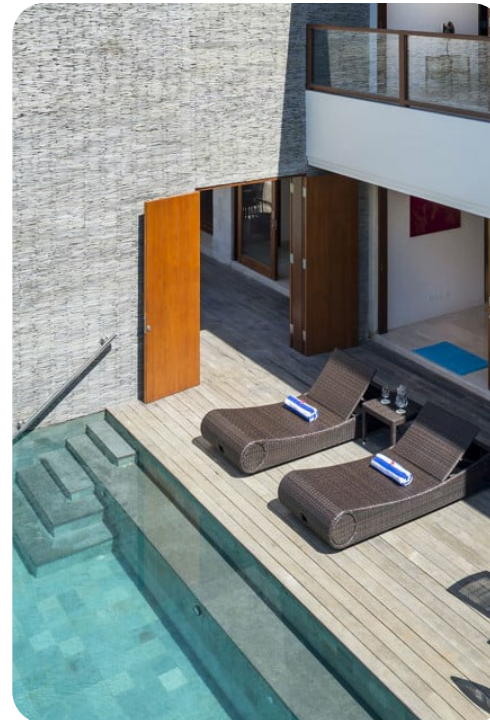
The rooms

Master suite

- Magnificent cliff-front master suite with ocean views
- Air-conditioned bedroom opening onto pool deck, with king-size bed and large bathroom with twin basins, bathtub, monsoon shower, and walk-in wardrobe

Guest suites

- Ideal for two families
- Four almost identical air-conditioned ocean-view bedrooms - two on each level
- Two configured as kings, two as twins; all four can be set up as either
- Two open onto a balcony, two onto the pool deck
- All four have ensuite bathrooms with twin basins, bathtub, monsoon shower and walk-in wardrobe



Location

Peacefully and privately situated, at the end of a winding country lane on Bali's southernmost tip, The Pandawa Cliff Estate is a hidden paradise overlooking the Indian ocean from its enchanting cliff-top setting.

Apart from a handful of other luxury villas sprinkling the cliff top, and the beach huts and local cafes bordering the white sands of Pandawa Beach far below (named after the five warrior brothers of the Mahabharata epic, whose white stone statues are carved into niches along the road leading down to the beach), there is little development in this unspoiled corner of Bali. But despite it's tranquil, rural setting, The Pandawa Cliff Estate is less than 30 minutes' drive from Bali's international airport, and within easy reach of several glorious surf beaches, the sacred sea temple of Uluwatu, and the many restaurants and beach bars of Jimbaran and Nusa Dua.

