

📍 Bophut

# Bophut 4126

🛏 4 🚿 4 👥 8





## Key features

- 4 bedrooms
- 4 bathrooms
- Sleeps 8
- Home gym
- Sauna room
- Infinity edge pool

## Bedrooms

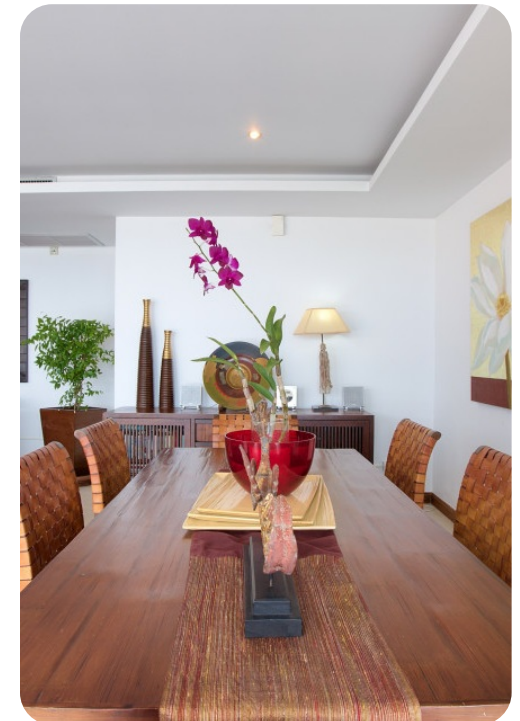
- Bedroom 1 - King-size bed
- Bedroom 2 - King-size bed
- Bedroom 3 - King-size bed
- Bedroom 4 - 2 twin beds

## Living area

- Open-plan living area
- Fully equipped kitchen
- Breakfast bar with seating
- Dining table and chairs
- Tastefully furnished living room with satellite TV and comfortable sofas
- Surround sound system

## Pool area

- Infinity edge pool
- Sunloungers
- Multiple Parasols
- Alfresco dining table and chairs
- Outdoor day bed
- Outdoor sala with lounge area
- Wrap around balcony



## Home entertainment

- Home gym includes elliptical machine, walking machine, rowing machine, free weights, yoga mats and gym ball
- Sauna room

## General

- Air conditioning throughout
- Complimentary wifi
- Bedding and towels included
- Private parking (4 cars)
- Sea-view

## Services included

- Continental breakfast or chinese breakfast
- One round trip from / to the airport
- Daily housekeeping
- Baby pack (baby monitor, high chair, baby cot, sterilizer and baby tub)

## Additional services (extra cost)

- Cooking class
- Baby sitting services
- Private trainers for yoga and pilates
- In villa dining (ingredients + 20% shopping charge)
- Care rental / taxi service / additional transportation services
- In villa massage service
- Manicure / pedicure
- Excursions / trips





## Location

### Big Buddha Temple (Wat Phra Yai)

This iconic temple is just a short drive from Bophut and features a massive golden Buddha statue. It's one of Koh Samui's most famous landmarks.

### Fisherman's Village

As part of Bophut, this historic village is right on your doorstep. Explore its charming streets, shops, restaurants, and the popular Friday night market.

### Maenam Beach

Located to the northwest of Bophut, Maenam Beach is known for its tranquility and long, peaceful shoreline. It's a great place for a relaxed day at the beach.

### Koh Samui International Airport

Just a short drive away from Bophut, the airport provides easy access to and from the island.

### Secret Buddha Garden

Located in the central part of the island, this hidden garden features statues and sculptures set in a lush, tropical environment. It's a tranquil and unique attraction.

