

📍 Anguilla

Beaches Edge

🛏 5 🚿 5 👥 10



Key features

- 5 bedrooms
- 5.5 bathrooms
- Sleeps 10
- Private pool
- Direct beach access
- Ocean views

Can be booked alongside *Champagne Shores* as part of a two-home estate. Weddings and events permitted when booking both villas, please enquire for details.

Bedrooms

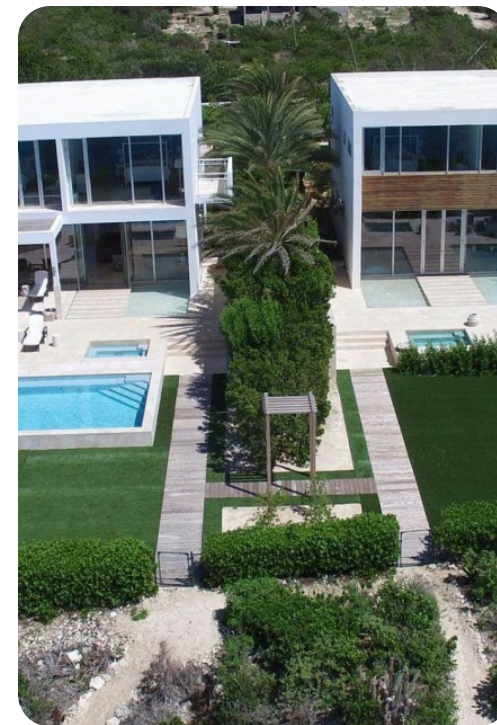
- Bedroom 1 - King-size bed; en-suite bathroom includes double vanity, bathtub and walk-in shower. Access to balcony
- Bedroom 2 - King-size bed; en-suite bathroom includes double vanity, bathtub and walk-in shower
- Bedroom 3 - King-size bed; en-suite bathroom includes double vanity and walk-in shower
- Bedroom 4 - Queen-size bed; en-suite bathroom includes single vanity and walk-in shower
- Bedroom 5 - Queen-size bed; en-suite bathroom includes single vanity and walk-in shower

Living area

- Open-plan living area
- Fully equipped kitchen
- Breakfast bar with seating
- Dining table and chairs
- Tastefully furnished living room with flat-screen TV and comfortable sofas

Outside area

- Private pool
- Jacuzzi
- Covered verandah with alfresco dining area
- Sunloungers
- Landscaped gardens
- BBQ grill



Home entertainment

- Flat-screen TVs in living area
-

General

- Air conditioning in bedrooms
 - Complimentary wifi
 - Bedding and towels included
 - Private parking
 - Beach and pool towels provided
 - Iron and ironing board
 - Washer and dryer
 - Safe in all bedrooms
-

Staff

- 24 hour concierge
 - Housekeeper
 - Chef service (upon request at additional cost)
 - Butler service (upon request at additional cost)
-

Extras

- Airport transfers available
- Daily maid service included

